

ature. From the Great Blasket
 Tomas O Criomhthainn, Peig
 ers and Muiris O Sulleabhain,
 nrs, respectively, of "An tOil-
 ach," "Peig" and "Fiche Bliain
 Fas." Tomas is dead; and
 ris O Sulleabhain was drowned
 ically in Galway Bay on June
 last. Peig alone survives. And
 ve gazed across the water from
 Head, the most westerly
 nt in all Ireland — the next
 ish to America, as it has
 n described — and let our
 s rest again on the Great
 sket we thought of the English
 olar, the late Robin Flower,
 ose ashes were strewn on that
 nd at his own request a few
 rs ago.

BEAUTIFUL SCENERY.

We alighted from the bus at a
 ce called Com, near Dun Mor,
 soon the sound of Gaelic
 ces was all around us. For this
 t of Kerry is Fíor Ghaeltacht —
 uly Irish-speaking. We had a
 nic, overlooking the sea, and
 nt some hours exploring the
 trict, basking in the sunshine,
 versing with the local people
 t dancing at a cross-road. But
 r the eyes strayed to drink in
 matchless scenery: the islands,
 cliffs, the ocean, the mountains
 t towered above us, and those
 t reached skyward across the
 er in distant Ibh Rathach. And
 id the rocks there was a blaze
 fuchsias — the deoraí De of the
 eilgeoiri. Robin Flower, in his
 ok, "The Western Island," de-
 ibing this lovely shrub, says:
 by the roadway fuchsias hang
 their waxen pendants, looking
 ily artificial in this wild land-
 pe, like the incongruous finery
 country girl puts on for a fair

A GAELIC STRONGHOLD.

aving Dun Mor we proceeded
 Dun Cuinn, for Ballyferriter,
 ere we spent a most enjoyable
 ning, singing and dancing, and
 ening to Gaelic conversation in
 p and street. We met there an
 hair O Muineachain, of Lime-
 k, and Garda O Flannagain, of
 hluirc, who is stationed there.
 ew miles west of the village we
 ted the camp where members
 An Realt were just completing
 week's course. An Realt is, of
 rse, an Irish-speaking section
 the Legion of Mary, whose motto
 "Tír, Teanga agus Creideamh."
 e course in Ballyferriter, the
 t of its kind, was organised by
 m O Maolcatha, of Cork, and
 ved a great success. Young
 n and women from Cork, Dub-
 Bray, Limerick, Clonmel, etc.,
 ended it. Three priests were
 a the party. Among the many

Proceeds of "bring and buy"
 sale were handed to the Treasurer.
 Guilds not represented were asked
 to bring same along to next
 meeting.

Treasurer's and Organiser's re-
 ports were read.

Next meeting, October 7th.

KILMALLOCK FAMILY

DOUBLY BEREAVED

Mr. Patrick Campion, who died
 recently in Chicago, was a native of
 Kilmallock, and was brother of Mr.
 Stephen Campion, victualler, Kil-
 mallock, and of the late Mr. Thomas
 Campion, merchant, Kilmallock.

The family suffered a second be-
 reavement by the death last week
 of Mr. James Campion, Ashill, Kil-
 mallock, a nephew of the late Mr.
 Patrick Campion, who died in
 Chicago.

The late Mr. James Campion was
 a member of a family long con-
 nected with the business and farm-
 ing life of the district. He was
 son of the late Mr. and Mrs. Thomas
 Campion, Kilmallock.

There was a very large and most
 representative attendance at his
 interment, which took place at
 Ballingaddy Cemetery.

CREAMERY FACILITY FOR OGOONOLLOE

The farmers of Ogonnolloe have
 now a flourishing branch of the
 Scariff Creamery at the "Monu-
 ment," where Rev. R. Burke, P.P.,
 acquired a site from Mr. P. Con-
 way (writes our Killaloe correspon-
 dent). This confers a great boon
 on the farmers, some of whom had
 formerly to travel a long distance
 to the nearest creamery.

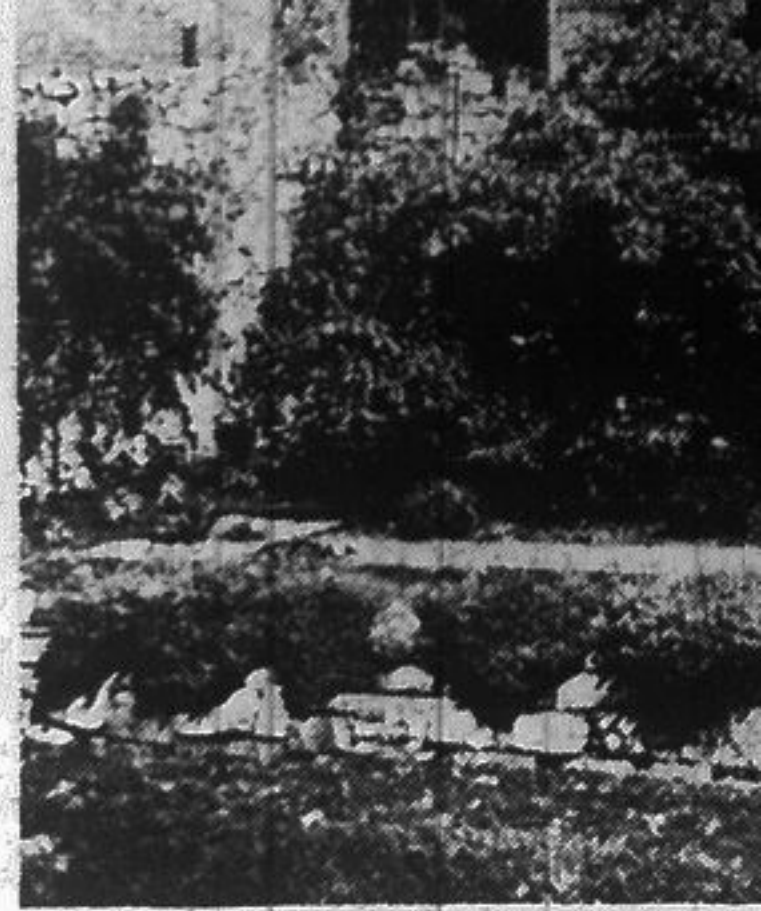
PALLASGREAN LABOUR CLUB

A largely attended meeting of the
 above Club passed the following
 resolution:—"That we call on the
 Labour members of the Limerick
 Co. Council to press forward for a
 wage of £3 10s. weekly for road-
 workers, so as to bring the wages of
 road-workers up to the standard of
 other counties."

SCHOOLS CHALLENGE CUP

The following were the results of
 G.A.A. matches played on Abbey-
 feale Sports Field for the Abbey-
 feale Schools League Challenge
 Cup:—

Abbeyfeale 4-1; Liscarrow 2-1. Mr.



Castle because of a late six-
 teenth century reference.
 Whitamore's inn described as
 being the Town Hall. The old Th
 in Mary Street was, indeed, al
 opposite the back entrance to
 Anne's gardens, and a mo
 shop still bears the name. Bu
 the days of the Whitamore
 the Town Hall was housed in
 Exchange, of which the po
 will survives behind the cha
 of St. Mary's Cathedral.
 recent American visitor, kins
 of the Whitamores, should d
 his footsteps thither even if
 excellent claret of the six
 eighties be no longer on tap.
**THE PROPERTY OF EDMUND
 FANNING.**

At the Cromwellian conquest
 tall house behind St. Anne's
 the property of Edmund Fann
 as is clear from the house lis
 the Civil Survey, which was
 lished in 1938. The site of the
 house was purchased by a pu
 spirited citizen at the time

CAVENDISH
Great
OPPORTUNITY

S A

CONTINUED BY
 PUBLIC DEMAND

76
 WKLY

