

THE CREAM OF WHISKEY
WHISKEY
 WOODFORD'S GORK.
 WOODFORD'S DUBLIN.
 WOODFORD'S BROWN LABEL.
 Bottles and Jars of all sizes

The Limerick Chronicle.

ESTABLISHED 1766.

155th YEAR OF PUBLICATION.

Woodford, Bourne & Co
 LIMERICK LTD

VOL 154. No 26.253

SATURDAY APRIL 23 1921

TRANSMITS THROUGH THE POST IN THE UNITED KINGDOM AT THE NEWSPAPER
 PORTAGE, AND TO CANADA AND NEW ZEALAND AT THE REGULAR POSTAGE

TWO PENCE

GOOD TEA.
AND GOOD SUGAR
AT REVISED PRICES
 ORDER TEA BY POST
 2s 6d, 2s 8d, 3s, 3s 6d, 4s.
 The Tea at 3s 6d is Specially Recommended
 POSTAGE FREE ON 6 lbs.

Woodford, Bourne & Co
 LIMERICK LTD

CUNARD LINE
 SAILINGS from QUEENSTOWN
 TO
 UNITED STATES & CANADA
 LIVERPOOL AND QUEENSTOWN TO
 NEW YORK

Liverpool, Queenstown,
 May 3..... May 4
 MAYAGUAYA..... May 11..... May 12
 MAYAGUAYA..... May 17..... May 18
 LONDON AND OBERBOURG TO NEW YORK
 MAYAGUAYA..... May 14
 SOUTHAMPTON AND OBERBOURG TO NEW YORK
 MAYAGUAYA..... April 23
 MAYAGUAYA..... April 30
 MAYAGUAYA..... May 14
 MAYAGUAYA (via LIMERICK)..... May 21
 LIVERPOOL AND QUEENSTOWN TO HALIFAX
 MAYAGUAYA..... May 3
 MAYAGUAYA..... May 11
 MAYAGUAYA..... May 17
 LONDON AND OBERBOURG TO HALIFAX
 MAYAGUAYA..... May 14
 Via Halifax. Passengers only

For rates of passage and further particulars apply Cunard Line, Liverpool; 51, Bishopsgate Street, E.C. 2; 20-21, Cockspur Street, London; W. 1, 1 Milway Road, Plymouth; Maritime Chambers, Southampton; James Little & Co., 10, 11, 12, 13, 14, 15, 16, 17, 18, 19, 20, 21, 22, 23, 24, 25, 26, 27, 28, 29, 30, 31, 32, 33, 34, 35, 36, 37, 38, 39, 40, 41, 42, 43, 44, 45, 46, 47, 48, 49, 50, 51, 52, 53, 54, 55, 56, 57, 58, 59, 60, 61, 62, 63, 64, 65, 66, 67, 68, 69, 70, 71, 72, 73, 74, 75, 76, 77, 78, 79, 80, 81, 82, 83, 84, 85, 86, 87, 88, 89, 90, 91, 92, 93, 94, 95, 96, 97, 98, 99, 100, 101, 102, 103, 104, 105, 106, 107, 108, 109, 110, 111, 112, 113, 114, 115, 116, 117, 118, 119, 120, 121, 122, 123, 124, 125, 126, 127, 128, 129, 130, 131, 132, 133, 134, 135, 136, 137, 138, 139, 140, 141, 142, 143, 144, 145, 146, 147, 148, 149, 150, 151, 152, 153, 154, 155, 156, 157, 158, 159, 160, 161, 162, 163, 164, 165, 166, 167, 168, 169, 170, 171, 172, 173, 174, 175, 176, 177, 178, 179, 180, 181, 182, 183, 184, 185, 186, 187, 188, 189, 190, 191, 192, 193, 194, 195, 196, 197, 198, 199, 200, 201, 202, 203, 204, 205, 206, 207, 208, 209, 210, 211, 212, 213, 214, 215, 216, 217, 218, 219, 220, 221, 222, 223, 224, 225, 226, 227, 228, 229, 230, 231, 232, 233, 234, 235, 236, 237, 238, 239, 240, 241, 242, 243, 244, 245, 246, 247, 248, 249, 250, 251, 252, 253, 254, 255, 256, 257, 258, 259, 260, 261, 262, 263, 264, 265, 266, 267, 268, 269, 270, 271, 272, 273, 274, 275, 276, 277, 278, 279, 280, 281, 282, 283, 284, 285, 286, 287, 288, 289, 290, 291, 292, 293, 294, 295, 296, 297, 298, 299, 300, 301, 302, 303, 304, 305, 306, 307, 308, 309, 310, 311, 312, 313, 314, 315, 316, 317, 318, 319, 320, 321, 322, 323, 324, 325, 326, 327, 328, 329, 330, 331, 332, 333, 334, 335, 336, 337, 338, 339, 340, 341, 342, 343, 344, 345, 346, 347, 348, 349, 350, 351, 352, 353, 354, 355, 356, 357, 358, 359, 360, 361, 362, 363, 364, 365, 366, 367, 368, 369, 370, 371, 372, 373, 374, 375, 376, 377, 378, 379, 380, 381, 382, 383, 384, 385, 386, 387, 388, 389, 390, 391, 392, 393, 394, 395, 396, 397, 398, 399, 400, 401, 402, 403, 404, 405, 406, 407, 408, 409, 410, 411, 412, 413, 414, 415, 416, 417, 418, 419, 420, 421, 422, 423, 424, 425, 426, 427, 428, 429, 430, 431, 432, 433, 434, 435, 436, 437, 438, 439, 440, 441, 442, 443, 444, 445, 446, 447, 448, 449, 450, 451, 452, 453, 454, 455, 456, 457, 458, 459, 460, 461, 462, 463, 464, 465, 466, 467, 468, 469, 470, 471, 472, 473, 474, 475, 476, 477, 478, 479, 480, 481, 482, 483, 484, 485, 486, 487, 488, 489, 490, 491, 492, 493, 494, 495, 496, 497, 498, 499, 500, 501, 502, 503, 504, 505, 506, 507, 508, 509, 510, 511, 512, 513, 514, 515, 516, 517, 518, 519, 520, 521, 522, 523, 524, 525, 526, 527, 528, 529, 530, 531, 532, 533, 534, 535, 536, 537, 538, 539, 540, 541, 542, 543, 544, 545, 546, 547, 548, 549, 550, 551, 552, 553, 554, 555, 556, 557, 558, 559, 560, 561, 562, 563, 564, 565, 566, 567, 568, 569, 570, 571, 572, 573, 574, 575, 576, 577, 578, 579, 580, 581, 582, 583, 584, 585, 586, 587, 588, 589, 590, 591, 592, 593, 594, 595, 596, 597, 598, 599, 600, 601, 602, 603, 604, 605, 606, 607, 608, 609, 610, 611, 612, 613, 614, 615, 616, 617, 618, 619, 620, 621, 622, 623, 624, 625, 626, 627, 628, 629, 630, 631, 632, 633, 634, 635, 636, 637, 638, 639, 640, 641, 642, 643, 644, 645, 646, 647, 648, 649, 650, 651, 652, 653, 654, 655, 656, 657, 658, 659, 660, 661, 662, 663, 664, 665, 666, 667, 668, 669, 670, 671, 672, 673, 674, 675, 676, 677, 678, 679, 680, 681, 682, 683, 684, 685, 686, 687, 688, 689, 690, 691, 692, 693, 694, 695, 696, 697, 698, 699, 700, 701, 702, 703, 704, 705, 706, 707, 708, 709, 710, 711, 712, 713, 714, 715, 716, 717, 718, 719, 720, 721, 722, 723, 724, 725, 726, 727, 728, 729, 730, 731, 732, 733, 734, 735, 736, 737, 738, 739, 740, 741, 742, 743, 744, 745, 746, 747, 748, 749, 750, 751, 752, 753, 754, 755, 756, 757, 758, 759, 760, 761, 762, 763, 764, 765, 766, 767, 768, 769, 770, 771, 772, 773, 774, 775, 776, 777, 778, 779, 780, 781, 782, 783, 784, 785, 786, 787, 788, 789, 790, 791, 792, 793, 794, 795, 796, 797, 798, 799, 800, 801, 802, 803, 804, 805, 806, 807, 808, 809, 810, 811, 812, 813, 814, 815, 816, 817, 818, 819, 820, 821, 822, 823, 824, 825, 826, 827, 828, 829, 830, 831, 832, 833, 834, 835, 836, 837, 838, 839, 840, 841, 842, 843, 844, 845, 846, 847, 848, 849, 850, 851, 852, 853, 854, 855, 856, 857, 858, 859, 860, 861, 862, 863, 864, 865, 866, 867, 868, 869, 870, 871, 872, 873, 874, 875, 876, 877, 878, 879, 880, 881, 882, 883, 884, 885, 886, 887, 888, 889, 890, 891, 892, 893, 894, 895, 896, 897, 898, 899, 900, 901, 902, 903, 904, 905, 906, 907, 908, 909, 910, 911, 912, 913, 914, 915, 916, 917, 918, 919, 920, 921, 922, 923, 924, 925, 926, 927, 928, 929, 930, 931, 932, 933, 934, 935, 936, 937, 938, 939, 940, 941, 942, 943, 944, 945, 946, 947, 948, 949, 950, 951, 952, 953, 954, 955, 956, 957, 958, 959, 960, 961, 962, 963, 964, 965, 966, 967, 968, 969, 970, 971, 972, 973, 974, 975, 976, 977, 978, 979, 980, 981, 982, 983, 984, 985, 986, 987, 988, 989, 990, 991, 992, 993, 994, 995, 996, 997, 998, 999, 1000

Mr. M. Ryan, Wolsley Bridge, Limerick; James Bourne, Newcastle West; Wm. McCarthy, Coppano; Mrs. Mary Treavor, Ballygarry, Co. Limerick; William Cullen, Newport; J. O'Mahony and Michael Madigan, Kesh; Edmund Ludlow, Limerick; Kesh's Shipping Agency, Limerick; or to Limerick.

CUNARD LINE, QUEENSTOWN
EDMUND LUDLOW,
 21, O'Connell Street, Limerick.
 Whose terms can be secured by either—
 1. To the South Africa, Australia, New Zealand, and White Star Lines to Australia, New Zealand, New Zealand, American, Canadian, and White Star Lines to New York, Boston, etc.
 2. To the Dominion, Canadian Pacific and other lines to Canada.
 COMMISSIONER FOR STATE, New York.

NEW ZEALAND Via PANAMA CANAL
 Shaw, Savill and Albion Line.
 THROUGH PASSENGER BOOKINGS TO AUSTRALIAN PORTS.
 For particulars apply to the Company, 34 Abchurch Lane, E.C. 4; and 62 Pall Mall, S.W. 1, at the White Star Line, Liverpool, and 100, 101, 102, 103, 104, 105, 106, 107, 108, 109, 110, 111, 112, 113, 114, 115, 116, 117, 118, 119, 120, 121, 122, 123, 124, 125, 126, 127, 128, 129, 130, 131, 132, 133, 134, 135, 136, 137, 138, 139, 140, 141, 142, 143, 144, 145, 146, 147, 148, 149, 150, 151, 152, 153, 154, 155, 156, 157, 158, 159, 160, 161, 162, 163, 164, 165, 166, 167, 168, 169, 170, 171, 172, 173, 174, 175, 176, 177, 178, 179, 180, 181, 182, 183, 184, 185, 186, 187, 188, 189, 190, 191, 192, 193, 194, 195, 196, 197, 198, 199, 200, 201, 202, 203, 204, 205, 206, 207, 208, 209, 210, 211, 212, 213, 214, 215, 216, 217, 218, 219, 220, 221, 222, 223, 224, 225, 226, 227, 228, 229, 230, 231, 232, 233, 234, 235, 236, 237, 238, 239, 240, 241, 242, 243, 244, 245, 246, 247, 248, 249, 250, 251, 252, 253, 254, 255, 256, 257, 258, 259, 260, 261, 262, 263, 264, 265, 266, 267, 268, 269, 270, 271, 272, 273, 274, 275, 276, 277, 278, 279, 280, 281, 282, 283, 284, 285, 286, 287, 288, 289, 290, 291, 292, 293, 294, 295, 296, 297, 298, 299, 300, 301, 302, 303, 304, 305, 306, 307, 308, 309, 310, 311, 312, 313, 314, 315, 316, 317, 318, 319, 320, 321, 322, 323, 324, 325, 326, 327, 328, 329, 330, 331, 332, 333, 334, 335, 336, 337, 338, 339, 340, 341, 342, 343, 344, 345, 346, 347, 348, 349, 350, 351, 352, 353, 354, 355, 356, 357, 358, 359, 360, 361, 362, 363, 364, 365, 366, 367, 368, 369, 370, 371, 372, 373, 374, 375, 376, 377, 378, 379, 380, 381, 382, 383, 384, 385, 386, 387, 388, 389, 390, 391, 392, 393, 394, 395, 396, 397, 398, 399, 400, 401, 402, 403, 404, 405, 406, 407, 408, 409, 410, 411, 412, 413, 414, 415, 416, 417, 418, 419, 420, 421, 422, 423, 424, 425, 426, 427, 428, 429, 430, 431, 432, 433, 434, 435, 436, 437, 438, 439, 440, 441, 442, 443, 444, 445, 446, 447, 448, 449, 450, 451, 452, 453, 454, 455, 456, 457, 458, 459, 460, 461, 462, 463, 464, 465, 466, 467, 468, 469, 470, 471, 472, 473, 474, 475, 476, 477, 478, 479, 480, 481, 482, 483, 484, 485, 486, 487, 488, 489, 490, 491, 492, 493, 494, 495, 496, 497, 498, 499, 500, 501, 502, 503, 504, 505, 506, 507, 508, 509, 510, 511, 512, 513, 514, 515, 516, 517, 518, 519, 520, 521, 522, 523, 524, 525, 526, 527, 528, 529, 530, 531, 532, 533, 534, 535, 536, 537, 538, 539, 540, 541, 542, 543, 544, 545, 546, 547, 548, 549, 550, 551, 552, 553, 554, 555, 556, 557, 558, 559, 560, 561, 562, 563, 564, 565, 566, 567, 568, 569, 570, 571, 572, 573, 574, 575, 576, 577, 578, 579, 580, 581, 582, 583, 584, 585, 586, 587, 588, 589, 590, 591, 592, 593, 594, 595, 596, 597, 598, 599, 600, 601, 602, 603, 604, 605, 606, 607, 608, 609, 610, 611, 612, 613, 614, 615, 616, 617, 618, 619, 620, 621, 622, 623, 624, 625, 626, 627, 628, 629, 630, 631, 632, 633, 634, 635, 636, 637, 638, 639, 640, 641, 642, 643, 644, 645, 646, 647, 648, 649, 650, 651, 652, 653, 654, 655, 656, 657, 658, 659, 660, 661, 662, 663, 664, 665, 666, 667, 668, 669, 670, 671, 672, 673, 674, 675, 676, 677, 678, 679, 680, 681, 682, 683, 684, 685, 686, 687, 688, 689, 690, 691, 692, 693, 694, 695, 696, 697, 698, 699, 700, 701, 702, 703, 704, 705, 706, 707, 708, 709, 710, 711, 712, 713, 714, 715, 716, 717, 718, 719, 720, 721, 722, 723, 724, 725, 726, 727, 728, 729, 730, 731, 732, 733, 734, 735, 736, 737, 738, 739, 740, 741, 742, 743, 744, 745, 746, 747, 748, 749, 750, 751, 752, 753, 754, 755, 756, 757, 758, 759, 760, 761, 762, 763, 764, 765, 766, 767, 768, 769, 770, 771, 772, 773, 774, 775, 776, 777, 778, 779, 780, 781, 782, 783, 784, 785, 786, 787, 788, 789, 790, 791, 792, 793, 794, 795, 796, 797, 798, 799, 800, 801, 802, 803, 804, 805, 806, 807, 808, 809, 810, 811, 812, 813, 814, 815, 816, 817, 818, 819, 820, 821, 822, 823, 824, 825, 826, 827, 828, 829, 830, 831, 832, 833, 834, 835, 836, 837, 838, 839, 840, 841, 842, 843, 844, 845, 846, 847, 848, 849, 850, 851, 852, 853, 854, 855, 856, 857, 858, 859, 860, 861, 862, 863, 864, 865, 866, 867, 868, 869, 870, 871, 872, 873, 874, 875, 876, 877, 878, 879, 880, 881, 882, 883, 884, 885, 886, 887, 888, 889, 890, 891, 892, 893, 894, 895, 896, 897, 898, 899, 900, 901, 902, 903, 904, 905, 906, 907, 908, 909, 910, 911, 912, 913, 914, 915, 916, 917, 918, 919, 920, 921, 922, 923, 924, 925, 926, 927, 928, 929, 930, 931, 932, 933, 934, 935, 936, 937, 938, 939, 940, 941, 942, 943, 944, 945, 946, 947, 948, 949, 950, 951, 952, 953, 954, 955, 956, 957, 958, 959, 960, 961, 962, 963, 964, 965, 966, 967, 968, 969, 970, 971, 972, 973, 974, 975, 976, 977, 978, 979, 980, 981, 982, 983, 984, 985, 986, 987, 988, 989, 990, 991, 992, 993, 994, 995, 996, 997, 998, 999, 1000

US MAIL STEAMSHIP COMPANY
 LONDON TO NEW YORK.
 INTENDED SAILINGS:
 "Franklin D. Roosevelt"..... May 11; June 18;
 "Franklin D. Roosevelt"..... May 17; June 24;
 "Franklin D. Roosevelt"..... May 23; June 30;
 "Franklin D. Roosevelt"..... May 29; July 6;
 "Franklin D. Roosevelt"..... June 5; July 12;
 "Franklin D. Roosevelt"..... June 11; July 18;
 "Franklin D. Roosevelt"..... June 17; July 24;
 "Franklin D. Roosevelt"..... June 23; July 30;
 "Franklin D. Roosevelt"..... June 29; August 6;
 "Franklin D. Roosevelt"..... July 5; August 12;
 "Franklin D. Roosevelt"..... July 11; August 18;
 "Franklin D. Roosevelt"..... July 17; August 24;
 "Franklin D. Roosevelt"..... July 23; August 30;
 "Franklin D. Roosevelt"..... July 29; September 6;
 "Franklin D. Roosevelt"..... August 5; September 12;
 "Franklin D. Roosevelt"..... August 11; September 18;
 "Franklin D. Roosevelt"..... August 17; September 24;
 "Franklin D. Roosevelt"..... August 23; October 1;
 "Franklin D. Roosevelt"..... August 29; October 7;
 "Franklin D. Roosevelt"..... September 5; October 14;
 "Franklin D. Roosevelt"..... September 11; October 20;
 "Franklin D. Roosevelt"..... September 17; October 26;
 "Franklin D. Roosevelt"..... September 23; November 1;
 "Franklin D. Roosevelt"..... September 29; November 7;
 "Franklin D. Roosevelt"..... October 5; November 14;
 "Franklin D. Roosevelt"..... October 11; November 20;
 "Franklin D. Roosevelt"..... October 17; November 26;
 "Franklin D. Roosevelt"..... October 23; December 2;
 "Franklin D. Roosevelt"..... October 29; December 8;
 "Franklin D. Roosevelt"..... November 5; December 14;
 "Franklin D. Roosevelt"..... November 11; December 20;
 "Franklin D. Roosevelt"..... November 17; December 26;
 "Franklin D. Roosevelt"..... November 23; January 1;
 "Franklin D. Roosevelt"..... November 29; January 7;
 "Franklin D. Roosevelt"..... December 5; January 14;
 "Franklin D. Roosevelt"..... December 11; January 20;
 "Franklin D. Roosevelt"..... December 17; January 26;
 "Franklin D. Roosevelt"..... December 23; February 1;
 "Franklin D. Roosevelt"..... December 29; February 7;
 "Franklin D. Roosevelt"..... January 5; February 14;
 "Franklin D. Roosevelt"..... January 11; February 20;
 "Franklin D. Roosevelt"..... January 17; February 26;
 "Franklin D. Roosevelt"..... January 23; March 3;
 "Franklin D. Roosevelt"..... January 29; March 9;
 "Franklin D. Roosevelt"..... February 5; March 14;
 "Franklin D. Roosevelt"..... February 11; March 20;
 "Franklin D. Roosevelt"..... February 17; March 26;
 "Franklin D. Roosevelt"..... February 23; April 1;
 "Franklin D. Roosevelt"..... February 29; April 7;
 "Franklin D. Roosevelt"..... March 5; April 14;
 "Franklin D. Roosevelt"..... March 11; April 20;
 "Franklin D. Roosevelt"..... March 17; April 26;
 "Franklin D. Roosevelt"..... March 23; May 3;
 "Franklin D. Roosevelt"..... March 29; May 9;
 "Franklin D. Roosevelt"..... April 5; May 14;
 "Franklin D. Roosevelt"..... April 11; May 20;
 "Franklin D. Roosevelt"..... April 17; May 26;
 "Franklin D. Roosevelt"..... April 23; June 1;
 "Franklin D. Roosevelt"..... April 29; June 7;
 "Franklin D. Roosevelt"..... May 5; June 14;
 "Franklin D. Roosevelt"..... May 11; June 20;
 "Franklin D. Roosevelt"..... May 17; June 26;
 "Franklin D. Roosevelt"..... May 23; July 3;

Ebrill Bros' Auctions.

Cattle NOTICE-The Usual Weekly Cattle Sale will not be held until further notice.

Turf Banks AT UPPER DROMINBOY, LISNAGRY, on Monday, 25th April, at two o'clock (old time), annual letting of Turf Banks for the season (in suitable lots). For list, Enquiries, E. G.

EBRILL BROS. Auctioneers LIMERICK.

The Agricultural Hall, LIMERICK.

UNRESERVED AUCTION OF Furniture and Effects

(Reserved for conveniences of sale.) To be held at the Agricultural Hall, Limerick. On Wednesday, 27th April. At Twelve o'clock (new time).

EBRILL BROS.

ARE instructed to sell as above the following: Mahogany bedstead, 2 half chairs to match; parcel of oak hall press, Brussels carpet, brass chair table, gas fittings, linoleum, picture, etc. etc.

Private notice will be received by the Auctioneers for Mr Blackwell's Home Farm at Barnakyle, Newport, comprising 37a 2 3/4 statute, held in fee-simple from the Irish Land Commission; annuity, £13 5s 0d.

EBRILL BROS. Auctioneers LIMERICK.

GRAZING LETTINGS

At the Agricultural Hall, Limerick. On Saturday, 30th April At Twelve o'clock (New Time).

EBRILL BROS. Auctioneers LIMERICK.

EBRILL BROS. Auctioneers LIMERICK.

EBRILL BROS. Auctioneers LIMERICK.

EBRILL BROS. Auctioneers LIMERICK.

EBRILL BROS. Auctioneers LIMERICK.

EBRILL BROS. Auctioneers LIMERICK.

EBRILL BROS. Auctioneers LIMERICK.

EBRILL BROS. Auctioneers LIMERICK.

EBRILL BROS. Auctioneers LIMERICK.

EBRILL BROS. Auctioneers LIMERICK.

EBRILL BROS. Auctioneers LIMERICK.

EBRILL BROS. Auctioneers LIMERICK.

EBRILL BROS. Auctioneers LIMERICK.

EBRILL BROS. Auctioneers LIMERICK.

EBRILL BROS. Auctioneers LIMERICK.

EBRILL BROS. Auctioneers LIMERICK.

EBRILL BROS. Auctioneers LIMERICK.

EBRILL BROS. Auctioneers LIMERICK.

EBRILL BROS. Auctioneers LIMERICK.

EBRILL BROS. Auctioneers LIMERICK.

EBRILL BROS. Auctioneers LIMERICK.

EBRILL BROS. Auctioneers LIMERICK.

EBRILL BROS. Auctioneers LIMERICK.

EBRILL BROS. Auctioneers LIMERICK.

EBRILL BROS. Auctioneers LIMERICK.

EBRILL BROS. Auctioneers LIMERICK.

EBRILL BROS. Auctioneers LIMERICK.

EBRILL BROS. Auctioneers LIMERICK.

EBRILL BROS. Auctioneers LIMERICK.

EBRILL BROS. Auctioneers LIMERICK.

EBRILL BROS. Auctioneers LIMERICK.

EBRILL BROS. Auctioneers LIMERICK.

EBRILL BROS. Auctioneers LIMERICK.

EBRILL BROS. Auctioneers LIMERICK.

EBRILL BROS. Auctioneers LIMERICK.

EBRILL BROS. Auctioneers LIMERICK.

EBRILL BROS. Auctioneers LIMERICK.

EBRILL BROS. Auctioneers LIMERICK.

EBRILL BROS. Auctioneers LIMERICK.

EBRILL BROS. Auctioneers LIMERICK.

EBRILL BROS. Auctioneers LIMERICK.

EBRILL BROS. Auctioneers LIMERICK.

EBRILL BROS. Auctioneers LIMERICK.

EBRILL BROS. Auctioneers LIMERICK.

EBRILL BROS. Auctioneers LIMERICK.

EBRILL BROS. Auctioneers LIMERICK.

EBRILL BROS. Auctioneers LIMERICK.

EBRILL BROS. Auctioneers LIMERICK.

EBRILL BROS. Auctioneers LIMERICK.

EBRILL BROS. Auctioneers LIMERICK.

EBRILL BROS. Auctioneers LIMERICK.

EBRILL BROS. Auctioneers LIMERICK.

EBRILL BROS. Auctioneers LIMERICK.

COUNTY OF TIPPERARY. Gurtshane, Newport. 11 Valuable Small Holdings OF PRIME LAND

Held in fee-simple from the Irish Land Commission. To be sold by Public Auction. On the 6th May, 1921. At Two o'clock (new time).

ARE instructed by Mr Wm Blackwell to sell as above the following small holdings, viz: LOT 1—Area 6 2 3/4 Statute, Annuity 2 6 2

EBRILL BROS. Auctioneers Limerick.

COUNTY OF LIMERICK. Barnakyle, Patrickswell.

Two Small Holdings TO BE SOLD BY PUBLIC AUCTION At the Agricultural Hall, Limerick. On Saturday, 7th May, 1921. At 12 o'clock (new time).

EBRILL BROS. Auctioneers Limerick.

EBRILL BROS. Auctioneers Limerick.

EBRILL BROS. Auctioneers Limerick.

EBRILL BROS. Auctioneers Limerick.

EBRILL BROS. Auctioneers Limerick.

EBRILL BROS. Auctioneers Limerick.

EBRILL BROS. Auctioneers Limerick.

EBRILL BROS. Auctioneers Limerick.

EBRILL BROS. Auctioneers Limerick.

EBRILL BROS. Auctioneers Limerick.

EBRILL BROS. Auctioneers Limerick.

EBRILL BROS. Auctioneers Limerick.

EBRILL BROS. Auctioneers Limerick.

EBRILL BROS. Auctioneers Limerick.

EBRILL BROS. Auctioneers Limerick.

EBRILL BROS. Auctioneers Limerick.

EBRILL BROS. Auctioneers Limerick.

EBRILL BROS. Auctioneers Limerick.

EBRILL BROS. Auctioneers Limerick.

EBRILL BROS. Auctioneers Limerick.

EBRILL BROS. Auctioneers Limerick.

EBRILL BROS. Auctioneers Limerick.

EBRILL BROS. Auctioneers Limerick.

EBRILL BROS. Auctioneers Limerick.

EBRILL BROS. Auctioneers Limerick.

EBRILL BROS. Auctioneers Limerick.

EBRILL BROS. Auctioneers Limerick.

EBRILL BROS. Auctioneers Limerick.

EBRILL BROS. Auctioneers Limerick.

EBRILL BROS. Auctioneers Limerick.

GIBSON'S MILLINERY.

Mrs McClatchey has just returned from London.

GOOD NEWS!! TINNED PEARS, PEACHES, PINES—Greatly Reduced. TEAS (Own Blends) from 2s 6d upwards. CHINA TEA—Doctors and Original. DELICIOUS HAMS AND MILD BREAKFAST BACON. FINDON HADDIES, KIPPERS, LING, Etc. Etc.

E. G. FITT, PROVISION MERCHANT, LIMERICK.

The Fashion Mart IS PATRICKSWELL NEW SPRING MILLINERY Now Showing.

SALE. EXTENSION OF BUILDINGS. All Fresh Spring Goods must be Cleared at or Below Cost. FURTHER REDUCTIONS DAILY! C. HAMILTON, 14 Bedford Row, Limerick.

LIMERICK CHRONICLE (Established 1766)

PUBLISHED TUESDAY, THURSDAY, & SATURDAY Evening. READ BY ALL CLASSES. Extensive Circulation in Town and Country. BEST ADVERTISING MEDIUM. Telegraphic & General News Service. LATEST SPORTING RESULTS. FULL LOCAL REPORTS. Price: -- TWOPENCE

Limerick Steamship Company LIMITED. DIRECT SERVICES. Shannon Rowing Club. "AT HOME" - AND - SCRATCH RACES. WILL BE HELD ON THURSDAY, 9th JUNE. ANNUAL BAZAAR. IN AID OF THE Haverhill Hall & Roxborough Schools. On Saturday Afternoon, April 30th. On Monday Evening, May 2nd. Dances open at 10 o'clock, and close at 12 o'clock. Luncheon, 2s; Tea, 9d. Music conducted by Mr F. Murray. The children of the schools will be present and sing. Admission—Saturday Afternoon: 1s; Children, 6d. Monday, 2s.

LIMERICK COUNTY COUNCIL. Scheme for Scholarships From Primary to Secondary Schools in County Limerick.

I.—NUMBER OF SCHOLARSHIPS. Six of the annual value of £40. The Committee shall be at liberty to reduce the value of the Scholarship where the pupil's parents or guardians are in a position to bear part of the expense of his or her education. The Committee shall, likewise, have power to make a supplementary grant not exceeding £10 per annum towards the maintenance of any scholar whose parents are unable to meet the expense incidental to residence in a Secondary School.

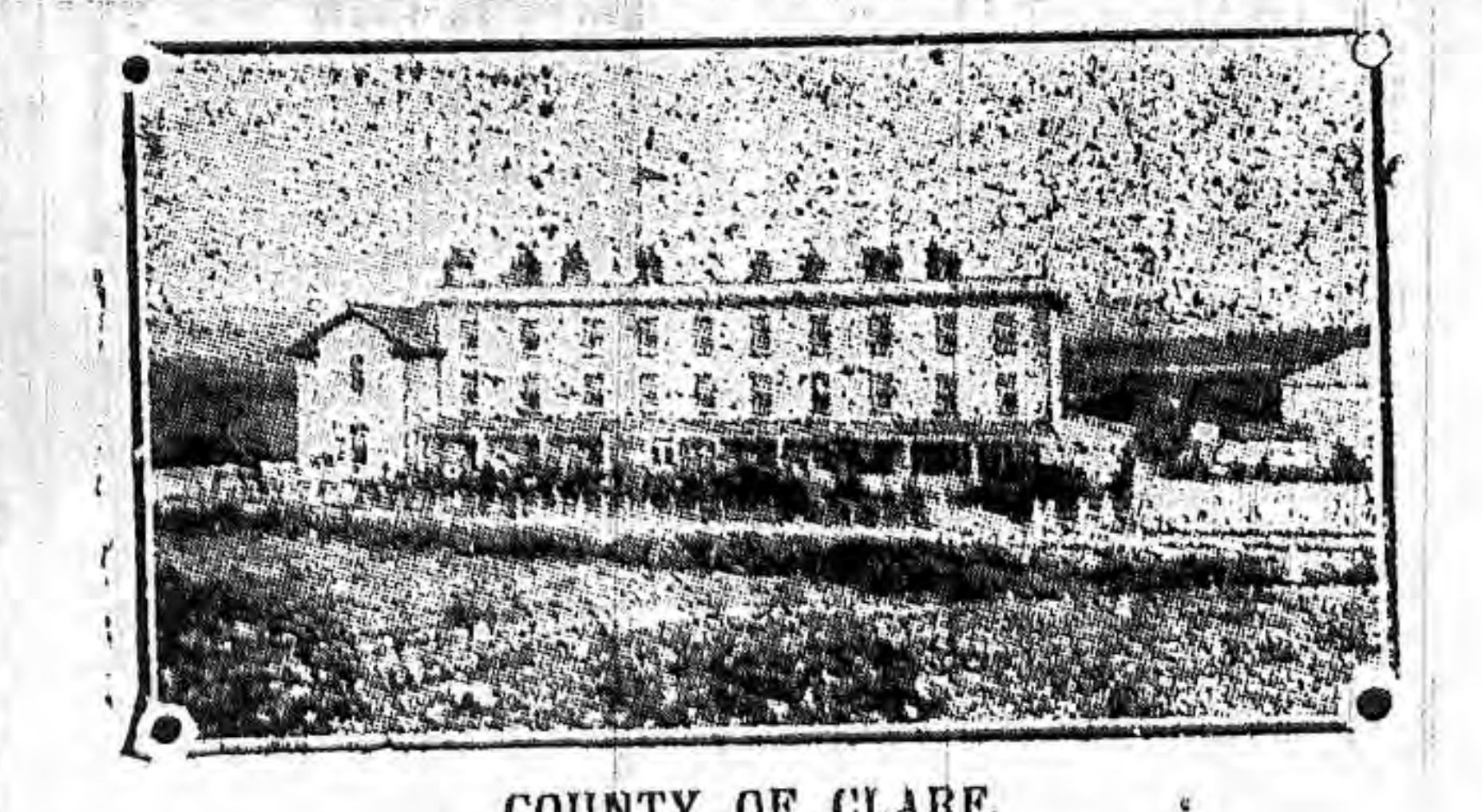
II.—CONDITIONS OF TENURE. (A) The Primary School from which the pupil comes must have adopted the Gaelic League Educational Programme as modified by Dal Binnann, viz., (a) Irish to be the official School Language, i.e. Irish to be used for Roll Calls, orders, prayers, etc. (b) Irish to be taught for vocational use to each child for at least one hour per day. (c) Irish history to be taught to all pupils. (d) Irish to be taught in all subjects for vocational use.

III.—ELIGIBILITY FOR SCHOLARSHIPS. The terms of these Scholarships shall be four years provided the pupil shows satisfactory progress as tested by (a) the periodical school examination; (b) the annual school examination at the end of the academic year; (c) the special test in Irish and English language; (d) the special test in setting and answering questions. The pupil to be taught at the Secondary School with a view to Matriculation at the N.U.I.

IV.—AGE LIMIT. Pupils shall be eligible for Scholarships up to but not exceeding 16 years on the first of June.

VI.—GENERAL POWERS. The Committee reserve the right to exclude any candidate from competing for a Scholarship without assigning a reason. The Committee also reserve the right to revise this Scheme or any part of it at any time, subject to the sanction of the Limerick County Council.

A J Sexton's Auctions



COUNTY OF CLARE. "THONOND HOUSE." LISDOONVARNA. ALTITUDE, 600 FEET.

Highly Important Sale by Public Auction of the above well-known FIRST-CLASS HOTEL WITH ABOUT 8 ACRES OF LAND ATTACHED, AS A "GOING CONCERN." ON SATURDAY NEXT, APRIL 30th, AT ONE O'CLOCK.

A J SEXTON HAS been instructed by Mrs Bulger, who is retiring from business, to sell as above:— The High-Class Hotel known as Thonond House, Lisdoonvarna, County Clare, with license attached, held under lease for 999 years, subject to the very small head rent of £8 14s 10d; P.L.V., 242. Licenses, £5.

ALFRED J. SEXTON, Auctioneer. 68 O'CONNELL STREET, LIMERICK.

For Sale by Private Treaty. "OSMA" — SEMI-DETACHED MODERN VILLA RESIDENCE, O'Connell Avenue (immediate possession).

For Sale by Private Treaty. MODERN BUILT 3-story Residence, known as Durrill Villa, O'Connell Avenue (with possession); lease 999 years; head rent, £5 10s; P.L.V. 219. P. E. O'DONNELL, Esq., Solicitor.

Valuable Hotel. FULLY licensed, situated in the best business centre of the city, on the main high-class and lucrative business route, to be sold as a "going concern." Full particulars from: A J SEXTON, Auctioneer

FOR SALE. A QUANTITY OF FIREWOOD AND BLOCKS. Apply—HOWLETT, Frederick Street. (4123)

ACKNOWLEDGMENT. MRS J E GALBRAITH desires to express her thanks to all the kind friends who contributed to her Country Produce Stall at P.M.A. Gift Sale. They have enabled her to hand over a very substantial amount to the Committee.

ACKNOWLEDGMENT. MRS G E GOODBODY wishes to thank all those who kindly helped her by assisting at her Cake and Sweet Stall at P.M.A. Gift Sale, and also those who so generously sent gifts.

BROUGHAMS. Landar, Victoria, new and second hand, inside Rallies, Outside Jir new and second hand, always in stock. One Good Second-Hand Motor for £100.

Griffin's Nursery Ballinacorney. DALMS, Flowering Plants, Cut Flowers, Weeds, and Bouquets. Over 1000 new and choice Chrysanthenums have been planted under glass in the open air.

SPRIG OF MINT was a fast horse, a good stayer and an even reeler in two seasons. He is a bay horse, 16.2 h, with 4 inches of bone below the knee. FEE—Thoro'-bred Mare — £8 6s. Croom's Fee — £8 6s.

JOHN HAYES, Binghamlan, Pallaskerry. POTATOES—Finest eating potatoes in wagon loads; lowest price, wholesale only, also White Seedling. Apply J. Hayes & Co., Ltd., Dundalk, the only large and established Potato Merchants who are outside the Belfast urban area in potatoes, which include a practically very merchant in the North. (10/12/20)

Surpassing anything of the kind, our rich... OFFICE BOY WANTED for City Office; must write a good hand; make himself generally useful; and first recommended. Apply by letter to 2, No 535 this office. (4522)

WANTED—Smart young girl to assist in city office; must be quick fit fingers. Apply No 555 this office. (4523)

WANTED—Smart young girl to assist in city office; must be quick fit fingers. Apply No 555 this office. (4523)

JURGENS' PHEASANT MARGARINE The Superior Brand. Better value than Butter! SOLD ONLY IN HALF-POUND PACKETS AT 16 PER LB.

L.P.Y.M.A. GIFT SALE.

Opened by The Lady Inchiquin.

Thursday was a gala day at the Limerick Protestant Young Men's Association. It was the occasion of the holding of a Gift Sale in aid of the War Memorial Building...

GARDENING NOTES.

POTATO NOTES.

A well-drained sandy loam, having a good supply of moisture, is best for potatoes, and the ground must be well dug or ploughed, to secure its being thoroughly aerated...

PIGOTT'S Musical Instrument Sale

Inspect our Special Sale Model PIANO at : : : £60

Songs, Pianoforte Solos, Dance Music Albums CONCERTINAS AND MELODEONS AT LESS THAN HALF-COST.

PIGOTT AND CO. LTD. THE MUSIC HOUSE, 111, O'CONNELL-ST., LIMERICK.

ARTIFICIAL TEETH

MR. CLEIN, 4, MALLOW-STREET LIMERICK. Absolutely Painless Extractions. Fillings Neatly Done.



WM. R. GLEESON SECOND HAND AND NEW FURNITURE, 52 Thomas Street.

FOOT AND MOUTH DISEASE

In the House of Commons, Sir A. Griffith-Boscawen, in reply to Captain Redmond...

OUTRAGES IN CLARE

An Ennis Correspondent says - A 'hardly' outrage was committed at Westborough, the residence of the Most Rev. Dr. Fogarty...

MR. B. MILLS' HOUSE BURNED AT ENNIS.

It is officially stated that four armed civilians entered the residence of Mr. Harry Mills, Milltown, Ennis, Co. Clare, on Wednesday night...

OPPORTUNITIES FOR YOUNG FARMERS.

We would direct the attention of Irish farmers to the announcement in our advertising columns...

GOT INDIGESTION?

Do you realize that nine cases of digestive trouble out of every ten are caused by excess acidity in the stomach...

DIABOLO CREAM SEPARATORS

Clean skimming, Reliable, Easy to manipulate, Guaranteed for Ten Years, One Month Free Trial.

Ford THE UNIVERSAL CAR. Limerick Motor Works, UPPER WILLIAM STREET, LIMERICK. TOURING CAR £240.

Kudos Photographic Studios. 117 O'CONNELL STREET, LIMERICK. THE MOST MODERN APPLIANCES FITTED (ELECTRIC AND DAYLIGHT).

"CYCLES AND MOTOR CYCLES." 1921 MODELS NOW ON VIEW. AGENTS FOR THE FOLLOWING WELL-KNOWN MACHINES: RUDGE-WHITWORTH, TRIUMPH, SUNBEAM.

MULLIGAN BROS. & TODD CYCLE AND MOTOR CYCLE AGENTS AND REPAIRERS. 124 O'CONNELL STREET, LIMERICK. PAINTING AND DECORATING. JOHN GEARY AND SONS, 7, THOMAS STREET, LIMERICK.

STALL-HOLDERS AND ASSISTANTS

set out in the programme as follows - President: Mrs. J. P. Goodbody, Mrs. Farmer; Assistants: Hon. Mrs. Vanstatter, Mrs. Vanstatter, Miss M. Vanstatter, Mrs. Robertson, Miss Florence Russell, Mrs. Conroy, Mrs. Conroy, Mrs. Conroy...

NOTES ON PEAS.

For small gardens, the half-dwarf or dwarf sorts are best, as tall peas need supporting with pea-sticks, which are not always easy to get at reasonable prices...

THE OPENING CEREMONY.

The Lady Inchiquin (who was accompanied by her son and daughter) very graciously performed the opening ceremony at 2.30, and was given a very hearty greeting by the guests...

FIGHT FOR A BRIDGE.

General Military Headquarters reports that military police surprised a party of civilian deserters on Wednesday night, on the road between...

DIABOLO CREAM SEPARATORS

Clean skimming, Reliable, Easy to manipulate, Guaranteed for Ten Years, One Month Free Trial. J. & G. BOYD, LTD., Merchants, Limerick.

DIABOLO CREAM SEPARATORS

Clean skimming, Reliable, Easy to manipulate, Guaranteed for Ten Years, One Month Free Trial. J. & G. BOYD, LTD., Merchants, Limerick.

SECRETARIAL COURSE FOR GIRLS.

THIS course (MORNING CLASS) which comprises the following subjects - Shorthand, Typewriting, Book-keeping, Business Methods, Commercial Arithmetic and Tots, Spelling, Dictation and Punctuation, Handwriting, English Composition or Business Composition, should be taken by all young ladies on business bent...

DOWSLEY'S COMMERCIAL SCHOOL, Glentworth Street, Limerick.

CORRY'S Original Tobacco Lice Powder.

For Lice and all Skin troubles in Cattle, Horses, Pigs, &c., for preventing Fly on Sheep and Warble Fly in Cattle, also for Fleas, &c., on Dogs, Cats, Poultry and their nests.

Sports Suits

cleaned, pressed, and done up like new by the Dartry process. It's a pleasure and a real saving.

Dartry Dye Works, Dublin.

LIMERICK BRANCH: 21 O'Connell Street.

LIME

BUILDING AND AGRICULTURAL PURPOSES. JOHN KENNY & SONS, CECIL ST., LIMERICK.

'RODINE' KILLS RATS

A Biological Experiment which is so successful in killing rats and mice.

I LEND MONEY

To Farmers and all approved applicants throughout Ireland on their signature alone.

DONT BORROW

In your own Town or in the Neighbourhood obtain your Loans privately. I will Cash for you, to approved applicants in all parts of Ireland.