

**THE CREAM OF WHISKEY**  
**WHISKEY**  
 WOODFORD'S CORE  
 WOODFORD'S BURLIN  
 WOODFORD'S BROWN LABEL  
 Bottles and Jars of all sizes

# The Limerick Chronicle.

ESTABLISHED 1766.

155th YEAR OF PUBLICATION.

**GOOD TEA**  
**AND GOOD SUGAR**  
 AT REVISED PRICES  
 ORDER TEA BY POST  
 2s 6d 2s 8d, 3s, 3s 6d, 4s.  
 The Tea at 2s 6d is Specially Recommended  
 POSTAGE FREE ON 6lbs.

**Woodford, Bourne & Co**  
 LIMERICK LWD

VOL 154. No 26,300

THURSDAY AUGUST 11 1921

TRANSMITTED THROUGH THE POST IN THE UNITED KINGDOM AT THE NEWSPAPER POSTAGE, AND TO CANADA AND NEWFOUNDLAND AT THE MAGAZINE POSTAGE

TWO PENCE

**Woodford, Bourne & Co**  
 LIMERICK. LTD.

**CUNARD LINE**  
**SAILINGS FROM QUEENSTOWN**  
 TO  
**UNITED STATES & CANADA**

LIVERPOOL AND QUEENSTOWN TO NEW YORK	
*CABONIA	Aug 13
*SCYTHIA	Aug 20
*CARMANIA	Aug 27
*AGANIA	Sept 7
LONDON AND OBERBOURG TO NEW YORK	
*SAXONIA	Aug 27
SOUTHAMPTON AND OBERBOURG TO NEW YORK	
*AQUITANIA	Aug 13
*EMPEROR OF CHINA	Aug 25
*AQUITANIA	Sept 3
*BERENGARIA (ex IMPERATOR)	Sept 10
LIVERPOOL AND QUEENSTOWN TO HALIFAX	
*CABONIA	Aug 13
*CARMANIA	Aug 27
*CABONIA	Sept 10
LONDON AND OBERBOURG TO HALIFAX	
*SAXONIA	Aug 27

For Rates of passage and further particulars apply Cunard Line, Liverpool; 61, Bishopsgate London, E.C. 2; 29-31, Cooks Street, London E.W. 1; 1 Milway Road, Plymouth; Maritime Chambers, Southampton; James Little & Co, Ltd., 1 Albert Square, Belfast; or to Local Agents—

Mrs M Ryan, Wellesley Bridge, Limerick; James Brondner Newcastle West; Wm McCarthy, Cappamore; Mrs Mary Treasor, Ballingarry, Co Limerick; William Oulien, Newport; J O'Mahony, Rathkeale; Edmund Ludlow, Limerick; R Jordan's Shipping Agency, Limerick 1 or to

**CUNARD LINE, QUEENSTOWN**

FORM 52.  
**Notice of Poor Rates Having Been Made.**

**COUNTY OF LIMREICK.**  
 Rural Districts of Croom, Glin, Kilmallock Limerick No 1, Mitchelstown No 2, New castle, Rathkeale, and Tipperary No 2.  
 NOTICE is hereby given that Poor Rates have been duly made on the Property Rateable thereto in above-named Districts.  
 The Rates for the Ordinary Expenditure of the said Districts for the service of the year ending the 31st March, 1922, chargeable to the above-named Districts, are at the following Rates in the Pound:—

	To be levied on Agricultural Land.	Same deducted in respect of Agricultural Grant	To be levied on Hereditaments.
<b>CROOM.</b>			
In respect of Co Charges	53'557	53'557	53'557
Do Union do	67'235	67'235	67'235
Do District do	32'856	32'856	32'856
	153'648		153'648
Total to be levied	12 10		12 10
<b>KILMALLOCK.</b>			
In respect of Co Charges	53'557	53'557	53'557
Do Union do	63'159	63'159	63'159
Do District do	34'849	34'849	34'849
	151'565		151'565
Total to be levied	12 7		12 7
<b>MITCHELSTOWN NO. 2.</b>			
In respect of Co Charges	53'557	53'557	53'557
Do Union do	40'330	40'330	40'330
Do District do	52'794	52'794	52'794
	146'681		146'681
Total to be levied	12 3		12 3
<b>RATHKEALE.</b>			
In respect of Co Charges	53'557	53'557	53'557
Do Union do	70'619	70'619	70'619
Do District do	44'170	44'170	44'170
	168'346		168'346
Total to be levied	14 0		14 0
<b>GLIN.</b>			
In respect of Co Charges	53'557	53'557	53'557
Do Union do	91'778	91'778	91'778
Do District do	89'935	89'935	89'935
	235'270		235'270
Total to be levied	19 7		19 7
<b>LIMERICK NO. 1.</b>			
In respect of Co Charges	53'557	53'557	53'557
Do Union do	95'330	95'330	95'330
Do District do	54'444	54'444	54'444
	203'331		203'331
Total to be levied	18 11		18 11
<b>NEWCASTLE.</b>			
In respect of Co Charges	53'557	53'557	53'557
Do Union do	66'783	66'783	66'783
Do District do	80'654	80'654	80'654
	200'994		200'994
Total to be levied	16 9		16 9
<b>TIPPERARY NO 2.</b>			
In respect of Co Charges	53'557	53'557	53'557
Do Union do	57'483	57'483	57'483
Do District do	39'217	39'217	39'217
	150'257		150'257
Total to be levied	12 7		12 7

And whereas certain Separate Charges are chargeable on the Areas or Contributory Places hereunder mentioned, the following Special Poundage Rates have been added to the Rates above mentioned for the payment of such Separate Charges, and the same form part of and will be collected with the above General Poor Rate:—

District off which Separate Charge is Leviable.	Nature of separate Charge.	Rate per £100 of Rateable Value.
County at large	Criminal Injury	0 02
Croom Rural District	Public Health	0 02
Kilmallock do	do	0 02
Kilmallock do	do	0 02
Kilmallock do	do	0 02
District do	do	0 11
Bruff do	do	0 12
Hospital do	do	0 04
Brures do	do	0 04
Limerick do	do	0 04
District do	Criminal Injury	0 22
do	Public Health	0 02
Annacotty Dispensary do	do	0 24
Calceonish do	do	0 24
Clacina do	do	0 24
Limerick Rural do	do	0 02
Marree do	do	0 02
Mitchelstown Rural Dis.	do	0 02

**SLATES, CEMENT.**

Now Discharging S.S. "Emlyn Mor" Cargo of  
**London Portland Cement.**

S.S. "Bangor" Cargo of  
**Penrhyn Bangor Slates**  
 All Popular Sizes.  
**ENQUIRIES INVITED**  
**SPAIGHT'S, LTD,**  
 IMPORTERS, LIMERICK.

**J. P. EVANS & CO.**  
 Engineers and General Merchants,  
 LIMERICK.

WE SHALL APPRECIATE ENQUIRIES FOR THE FOLLOWING:—  
 Separator Duplicate Parts, Bolts, Belts, Ropes, Lubricating Oils, Up-to-Date Dairy Machinery and General Requirement, Decorticated Cotton Cake Linseed Cake, Linseed Cake Meal, Paints, Oils, Colours, Drugs, Varnishes, Glass, Cement, Lamps in Variety, Large and Varied Stocks of Agricultural Implements and Machines, High-Class Seeds for the Farm and Garden, Washing, Wringing, and Mangling Machines.

REPAIRS OF ALL KINDS CARRIED OUT IN OUR WORKS BY A HIGHLY-SKILLED STAFF OF MECHANICS TO GAS, OIL, AND STEAM ENGINES, REFRIGERATORS, SEPARATORS, HEATERS, COOLERS, PUMPS, VATS, ETC.

**1921---TENNIS SEASON---1921.**

**Mulligan Bros & Todd**

Have just received a Consignment of  
**Slazengers' Famous Tennis Rackets,**  
 Presses, Balls, Gut Reviver,  
 Waterproof Covers and Bags,  
**LADIES' AND GENTS' TENNIS SHOES.**  
 Note Address :  
**MULLIGAN BROS. & TODD**  
 The Sports' Warehouse,  
 124 O'CONNELL STREET, LIMERICK

**WM. R GLEESON**

FOR  
**SECOND HAND AND NEW FURNITURE**  
 52 Thomas Street.

**WINES.**

**CLARET :**  
 "Vin Ordinaire" 2/- large, 1/- small  
 Chateau Le Bourdeu or St Julien 3/- " 1/6 "  
**BURGUNDY :** 3/- " 1/8 "  
 Invalid Port 4/6  
 Finest Tawney Port 5/-  
 Very Finest Dry White Port 5/-  
**SHERRY :**  
 "Vino de Pato" 4/-  
 "Oloroso" 5/-

Messrs Michael Egan,  
 Patrick Street, Limerick.  
 £10 Upwards Granted to Farmers.

SHOPKEEPERS, and all responsible persons on their own approved PERSONAL SECURITY; repayments to suit borrowers; lowest terms; before applying elsewhere, write or call to the MANAGER, 57 CATHERINE ST., LIMERICK.

**ZONOPHONE • ZONOPHONE • ZONOPHONE**

*Make the fine days more pleasant*

No more delightful means of entertainment can be found than a Zonophone instrument and a good selection of Zonophone Records. Whether indoors or outdoors it is the one source of pleasure that appeals to every member of the family or friends.

We shall be pleased to play you any Zonophone Records you may wish to hear. Call today and hear the latest successes. If unable to call we will gladly send you full list on request.

**PIGOTT & CO., Ltd,**  
 111 O'CONNELL ST  
 LIMERICK.

**John MacNamara & Son**

PAINTERS AND DECORATORS,  
 58, Catherine Street, Limerick  
 NOW IS THE TIME TO PLACE ORDERS FOR PAINTING AND PAPERING  
 Thorough Preparation, Best Materials, First-Class Workmanship.  
 ESTABLISHED 1850. TELEPHONE

**PAINTING AND DECORATING**

**JOHN GEARY AND SONS,**  
 HOUSE AND CHURCH DECORATORS  
 7, THOMAS STREET, LIMERICK  
 Large Assortment of Papers always in stock at Moderate Prices  
 Paints and Books from all the Leading Manufacturers. Prices and Dado Mouldings in stock  
 ASK FOR ESTIMATES

**IMPORTANT BUSINESS**

People are apt to forget that health management is the most important business in which they can be engaged. It requires only a few moments' reflection, however, to realise that, if through neglect or ignorance one's health is injured all one's efficiency and enjoyment of life is impaired. You simply cannot afford to let yourself get run down or to ignore any symptom of impending ill-health. Whenever you have any reason to believe that your stomach is out of order or that you are inclined to be bilious or constipated, you will be wise to take a dose of Beecham's Pills and to continue taking them according to directions until you feel quite all right again.

**BEECHAM'S PILLS.**

Sold everywhere in boxes, price 1/1 (56 pills) & 2/9 (168 pills).

**LIMERICK CHRONICLE**

(Established 1766)  
 PUBLISHED  
 TUESDAY, THURSDAY, & SATURDAY Evening

READ BY ALL CLASSES.  
 Extensive Circulation in Town and Country  
**BEST ADVERTISING MEDIUM**  
 Telegraphic & General News Service  
**LATEST SPORTING RESULTS**  
 RATE CARDS may be had at Office, or forwarded on Application.  
**FULL LOCAL REPORTS**  
**Price : - - TWOPENCE**

**Small Advertisements**

**Small Advertisements, "Wants," etc**  
 One Halfpenny per Word, Minimum 1s/6d. Three Insertions, Minimum 3s.

We desire to inform persons applying to advertisements in this column that when the name or address of the advertiser is not given replies should be addressed to the "Box Number," or initials designating the advertisement, c/o *Chronicle* Office.  
 No information can be given by us regarding the advertiser.

**ASK FOR O'Donovan's "Garryowen" Mineral Waters and bottled drinks; purest and best.**

**BRIGHT SUNNY DAYS** are welcome after the severe winter season. If you wish to retain pleasant pictures of nature's beauty spots now is the time to join the army of happy Kodakers. We are agents for *Burgis* and *Kodak* Cameras and can now offer them at greatly reduced prices. They are fitted with perfect lenses, and thus take perfect pictures. We have everything in *PHOTO SUPPLIES* and guarantee their splendid quality. Developing and printing of films finished in 24 hours. **J LAIRD & CO,** Photographic Chemist, Limerick.

**DEBT COLLECTING AGENCY (Established 1890).** (The oldest Limerick Loan Office 1868). Debts and rents collected on our mission, and money advanced. Open daily 10 to 3 o'clock.—**J. H. ENRIGHT,** 9 Glastow Street, Limerick. —27

**PEARL'S ENCYCLOPEDIA**—Just received, the new edition of this wonderful book. Price 3s only, at Galbraith's, 33 Upper Cell-street.

**KODAKS** at reduced prices can be had from **WIDDESS, Roche's-street.** Best place in Limerick to get your films developed and printed. Hundreds testify. Call and see specimens of the actual work. 3 doors up from Bob Ryan's corner 55 Roche's-street.

**UJAL FLY EXTERMINATOR** for destroying all kinds of insect pests. Two teaspoonfuls make a pint of effective fly-killer. 1/- per bottle. Flies must hate **WIDDESS, the Chemist.** He sells this effective fly-killer.

**TENNIS SHOES,** etc, can be made snow white with *Snowflake Cream.* No trouble, no mess, and a perfect result. To be had from **WiddeSS, Chemist, Roche's-street.** Bottles, 3d each. Also *Straw and Panama Cleaner,* 3d per packet; *Velour and Suede Cleaner,* 3d and 6d packets, for any colour. *Luton Straw Hat Dye* 1/4 per bottle, with brush free.

**DOCTORS' PRESCRIPTIONS** are being compounded by us every day. We have a special department set aside for this purpose to ensure that our dispenser, who is a fully qualified chemist, is not in any way distracted from his responsible work. Our department is equipped with modern apparatus, and we stock only the very best of drugs. Prices very moderate.—**LAIRD & CO, Dispensing Chemists, Limerick.**

**SAFETY RAZOR BLADES RE-SHARPENED** equal to new, 1s per dozen. Single or double edge. Returned post paid, 1s 2d.—**P Clarke,** 33 Queen street, Limerick. (a39 a13)

**PAINTING**—Oils, Putty, Enamels, Varnishes all kinds of Brushes, Booklets, Polishes and general Chandlery.—**PEACOCKE,** 65 William street.

**HEALTH AND HAPPINESS** go hand in hand. If you feel "run down," "out of sorts," "want of energy," now is the time to make yourself feel "fit" throughout the trying summer season. We recommend you strongly to take some of our standardised remedies which drive out the poisons which have accumulated in your system during the indoor season.—**LAIRD'S BITTER ORANGE PURIFIER,** 2/0 and 3/6 per bottle. **LAIRD'S COD LIVER OIL, PEACOCKE'S REXALL SYRUP OF HYPOPHOSPHITES, REXALL NERVE TONIC, BLAUD'S IRON PILLS.**—**LAIRD & CO, Dispensing Chemists, Limerick.**

**TESTED GARDEN SEEDS** are the only kind we keep. Now is the time to make a garden and raise several crops of small vegetables like radishes, lettuce, onions, beans, peas, and nice flowers like sweet peas, carnations, pansies, etc. **LAIRD'S LTD, Chemist, Limerick.**

**ACT WISELY.**—The next time you are buying try "Woodford's" Delicacies for the best and most satisfactory.—**Woodford, Bourne and Co, Ltd, Limerick.** (—18)

**OVER TWENTY TITLES IN STOCK** by **GARVICE,** the Prince of story-tellers, at **GALBRAITH'S Bookshop,** 33 Upper Cell-street, Limerick.

**A 1920 Health Report** says:—"It is true economy to feed a child properly." **GLAXO** is at once the most economical and all-sufficient food for infants. It is a dried milk of standard quality, containing all the elements necessary for their nourishment, and only needs the addition of hot-water, when the food is instantly prepared. *Tea-day GLAXO* is the most widely distributed food in use for both infants and invalids. Price 1/6 and 5/- (a 2/9 size is expected shortly), from the local agent—**M. B. WIDDESS, Chemist, 55 Roche's-street.**

**IOLMA CREAM** and *Iolma Complexion Powder* are greatly appreciated just now for their pleasant cooling properties. You know how the strong sun burns up the skin. Use *Iolma Cream* and keep your complexion. *Iolma Powder* is the lightest face powder known; it adheres invisibly and does away with the unpleasant moist appearance of the skin in hot weather. Both these toilet adjuncts can be had from **M. B. WIDDESS, Chemist, Roche's-street.** Cream 1/3 per jar; Powder 2/6 per box.

**PAINT** helps to brighten up the home and make everything look neat; just have a look round and see what needs brightening up. We can supply you with **OILS, DRY COLOR, LEADS, TURPENTINE, MIXED PAINTS, VARNISHES, ENAMELS, VERETIAN RED, YELLOW OCHRE, BRUSHES, ETC.**—**LAIRD & CO, Paint and Oil Merchants, Limerick.**

**£5 to £5,000 Advanced Privately**

**ON SIMPLE PROMISSORY NOTES.** No Bills of Sale taken, and absolute privacy guaranteed. First letters of application receive prompt attention, and intending borrowers are visited upon by a representative who is empowered to complete transaction on terms mutually arranged, no charge being made unless sets are actually completed. Special quotations or short loans. Write in confidence to—  
**ADVANCES (Lancaster) Ltd., 21 EXCHEQUER STREET, DUBLIN**

**THESE ARE THE FAIR HOUSES FOR Printing & Advertising in the City:**

**MESSRS G. McKern & Sons, Ltd, O'Connell-street**  
**MESSRS O'CONNOR & CO, O'Connell-street.**  
**"LIMERICK CHRONICLE," O'Connell-street.**  
**VARLISH'S ENAMEL, O'Connell-street.**  
**"MUNSTER NEWS," O'Connell-street.**  
**"LIMERICK ECHO," Bachelors-street.**  
**"RECORD" PRINTING CO., Cornmarket Row.**  
**R. T. LEVETT, Upper Thomas-street.**  
**CITY PRINTING CO., Rutland-street.**

**GET YOUR PRINTING AND ADVERTISING DONE UNDER TRADE UNION CONDITIONS BY THE ABOVE.**

On behalf of the Limerick Typographical Society  
**M. HARTNEY, President.**  
**C. G. CAREY, Secretary.**



MESSRS DAVIES SURGEON DENTISTS, 11 Cecil Street, Limerick. Regular Fortnightly Attendance Limerick, Ennis, and Tipperary.

GIBSON'S Millinery & Costumes, Specially Reduced Prices during this month previous to stocktaking.

University College, Cork

(National University of Ireland). FULL Course for Degrees in Arts, Celtic Studies, Science, Medicine, Dentistry, Engineering, Commerce, Agriculture, Law, and Music.

Bishop Foy School, WATERFORD. Chairman of Governors—The Lord Bishop of Cashel.

PROVIDES a first-class education with preparation for all usual examinations. Boarding House for boys from 9 to 19 years in former Bishop's Palace.

TYPE COPYING.

CIRCULAR Letters, Testimonials, Notices of Meetings, Balance Sheets, Authors' MSS., Legal and Engineering, executed promptly.

LIMERICK DISTRICT ASYLUM.

THE Committee of Management of the above Asylum will be grateful for gifts of illustrated papers, newspapers, and magazines for the use of the patients.

CORRY'S Original Tobacco Lice Powder.

For Lice and all Skin troubles in Cattle, Horse Flies, &c., for preventing Fly on Sheep and Warble Fly in Cattle, also for Fleas, &c., on Dogs, Cats, Poultry and their nests.

Approved by Board of Agriculture

In Tins, 1/9 and 3/-; also in Bulk. Also Corry's Ringworm Lotion, Equine Mange, Spoils, Maggot Lotion, Foot Rot Lotion, Corry's Warble Fly Lotion, and the Red Seal Chittibain Lotion, in bottles, 1/3.

The Fountain Pen Depot

The "Swan" Fountain Pens, 12s 6d upwards. Presentation Pens in Variety. The "Waterman" Fountain Pen, 12s 6d up. The "Onoto" Pen, 17s 6d up.

O'MAHONY & CO., 120 O'CONNELL STREET, LIMERICK.

DON'T BORROW

In your own Town or Neighbourhood obtain your Loans privately. I lend Cash by Post, to approved applicants, in all parts of Ireland.

MALE TYPIST seeks evening employment;

good work and good references. Write Box No 803 this office. [A3 12]

WANTED—Cottage and Plot near Limerick;

also Two Rooms, furnished or unfurnished. Apply, Box No. 805, this office. [A3 13]

SITUATION WANTED as Barmaid, practical

experience, capable of taking charge of bar; good references. Apply by letter to Box No 802 this office. [A3 13]

A CONFIDENTIAL TIP FOR EVERYBODY

is to buy brushes at LAIRD'S, for the average buyer of brushes is not a judge of bristle quality, therefore it is wise to patronise a firm which has the reputation of handling quality goods.

THE SCIENTIFIC SIDE OF PHARMACY.

At our establishment the scientific side of pharmacy is given special emphasis. Our prescription department is modern in every detail, and equipped with the finest drugs, and the most up-to-date apparatus necessary for carrying out the most intricate prescription work.

LADIES SUPERFLUOUS HAIR permanently

removed by Electrolysis. 10/6 per sitting. A. Staehli, 41 Cecil Street, Limerick. (10)

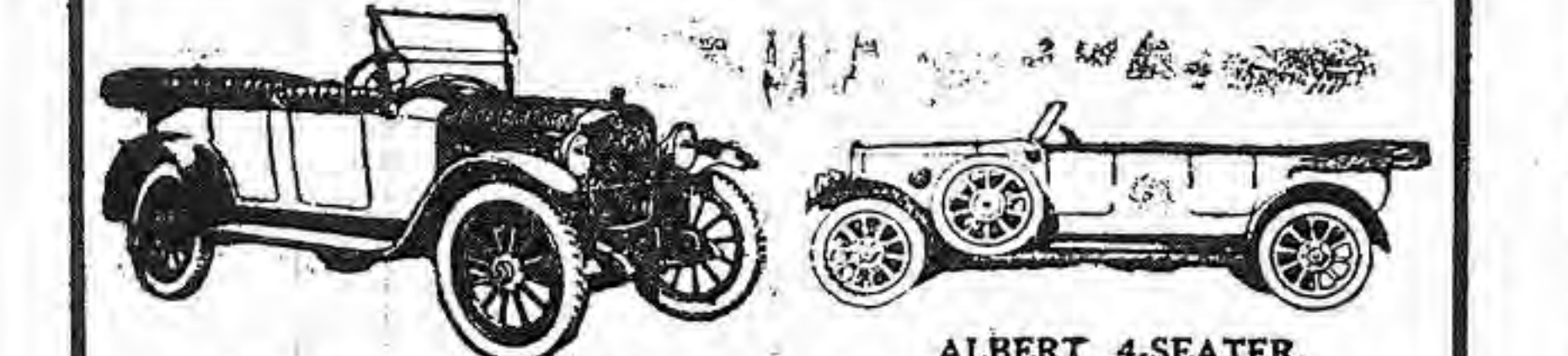
BEST COAL 65s. : : : per ton. KITCHEN COAL 56s. 6d. : : : per ton. Both Double Screened, Delivered and Stored in Limerick. This offer only holds good August 15th.

Wallace Bros., Ltd., COAL IMPORTERS, Mallow Street, Limerick. Telephone, 4. Telegrams, "Kuland."

DUBLIN MOTOR SHOW GREAT REVIVAL

Irish Motoring During the period of the Horse Show we have arranged to hold a Special Exhibition of shop-soiled and used cars at exceptionally favourable prices.

Automotive Clearing House, 57, Lower Baggot St., DUBLIN. The following Cars are on View and for Sale: ALBERT 4-Seater and DORT Balcon, Coupe and 4-Seater.



Price—£475 Price—£495

FRUIT PRESERVING JARS

The KILNER Fruit and Vegetable PRESERVING JAR. 2lb Size ... 10s 6d per dozen. 3lb Size ... 13s 6d per dozen.

GOODWIN & CO, Ltd, WILLIAM STREET, LIMERICK. HOUSES FOR SALE AT CORBALLY, ENNIS ROAD, NORTH CIRCULAR ROAD AND BALLINACURA.

COKE! COKE! COKE! Best Quality French Gas Coke, EX-STEAMER, Just Discharged. Enjoy Clean and Bright Fires During Strike at Low Cost.

H. J. OWENS, DOCK ROAD, LIMERICK, TARENT, THE WHITEHAVEN COLLIERY CO., LTD.

PROFIT BY THIS AD. THERE'S A REASON why people prefer to burn BLUNDELL'S KING WIGAN and our BEST ORKNEY 4-FOOT. It's because it's ALL coal—no dirt or slate.

Limerick Steamship Co. LIMITED. GREAT COAL DEPOT, Dock Road, Limerick. Telegrams: "Steamship." Telephone: 10.

NEW ZEALAND VIA PANAMA CANAL. Shaw, Savill and Albion Line. THROUGH PASSENGER BOOKINGS TO AUSTRALIAN PORTS.

Motors For Hire. REASONABLE FARES. The Motor Service Co., 16 THOMAS STREET. PHONE 320.

Strand Hotel, Rosslare. For Health, Pleasure and Comfort. GOOD GOLF, TENNIS, BATHING AND DANCING.

EDMUND LUDLOW, 24 GLENWORTH STREETS, LIMERICK. Where Berths can be secured by either—London Castle Line to South Africa, Aberdeen, Belfast, P. & O. and White Star Lines to Australia, New Zealand Shipping Co. and Shaw-Saville and Albion Co. to New Zealand.

I LEND MONEY To Farmers and all approved applicants throughout Ireland on their signatures alone. Neither sureties nor securities being required.

Sufferers from Eczema, Boils, Pimples and Eruptions, Bad Legs, Abscesses, Ulcers, Piles, Glandular Swellings, Rheumatism, Gout.

Clarke's Blood Mixture. The One Way to Real Relief. complete and lasting, is to rid the blood of the poisonous waste matter, the cause of such troubles.

CLARKE'S BLOOD MIXTURE. (1) Malt: Remi etes Amle, cheap 1/3 ounce (from St. Francis, pt. 1, chape 19 21). (2) Quinine in French to be answered in French. (3) A passage or passages from some other French work or works for translation at sight. (4) Short sentences, colloquial phrases, and a passage for translation from English into French.

BATH SPONGES—A case of excellent pieces just arrived. At 1/6 price 2 each. Make an early selection and secure the pick. Hair Brushes, Combs, Wash Gloves, Bathing Caps, Swimming Caps, and a variety of holiday goods.

CLARKE'S BLOOD MIXTURE. Of all Chemists, etc. 3/- per bottle, six bottles 15/-.

MAURICE FITZGERALD, Secretary to Committee. BATH SPONGES—A case of excellent pieces just arrived. At 1/6 price 2 each. Make an early selection and secure the pick.

FARMING NOTES.

Visit to Agricultural College, Glasnevin. A circular of the Department of Agriculture... The visitors were shown over the experimental grounds of the Plant Breeding Division...

PAST CENTURY RECORDS.

1859. In the LIMERICK CHRONICLE of November, 1859, we find the following: Wednesday, November 2. ST JOHN'S CATHEDRAL. The magnificent cathedral of St John's...

ABBÉ HAMON. A PRIEST. Has special treatment for DIABETES, ALBUMINURIA, RHEUMATISM, GOUT, BRONCHITIS, and ALL CHRONIC DISEASES.

THE VICEREGAL HOUSEHOLD. FACTS AND FANCIES.

The "Dublin Gazette" announces that His Excellency the Lord Lieutenant has been pleased to make the following appointments to the Viceroyal Household: Private Secretary—Stephen G Tallant, Esq., C.B., C.S.E., late Irish Guards...

LIMERICK COUNTY COUNCIL. Scheme for University Scholarships in County Limerick.

I.—DATE OF OPERATION. For the present holders of Bachelorships the regulations heretofore in force shall continue to apply. These new regulations shall come into operation in the Season (1921-22) for entrance Scholarships...

The Optical Prescription House. SPECTACLE AND CLIP FRAMES AND RIMLESS MOUNTINGS. PRISM BINOCULARS, FIELD AND OPERA GLASSES, EYEGLASS CHAINS AND CORDS...

different in respect of difficulty. 1. Candidates will be furnished with printed material, and will be required to draw up a Proof-sheet, a brief and precise summary of the material...

Second Growth in Potatoes.

Numerous enquiries have been received by the Department, since the weather changed, regarding potatoes sprouting in the ground—a condition apparently very general in many varieties...

CASTLECONNELL BRIDGE.

The presentments for £1,000 each from the counties of Clare and Limerick to erect a bridge at Castleconnell having been assented to by the Legislature...

IRISH RAILWAYS BILL. Government's Attitude.

It was announced yesterday that the Government had come to a decision of great importance in regard to the Irish Railways Bill. It was that they would not proceed with the measure...

RUSSIA'S STARVING MILLIONS.

A correspondent writes—Russians whom I have met in London say that the worst of the Russian famine will—unless the world comes to Russia's aid—come a year or two hence...

IRISH AGRICULTURAL PRODUCE.

Prices (Wholesale) current at important Irish ports during the week ended 6th August, 1921, furnished by the Department of Agriculture...

MUNICIPAL ELECTIONS.

The annual municipal elections were held yesterday, the only ward in which there was a contest being the Abbey, where the re-election of Alderman William Lanooy was opposed by Mr Robert McDonnell...

RAILWAY PACKET FROM CORK TO LIMERICK.

A public meeting was held on Thursday last at the Hotel, Kilmallock, to take steps for securing railway communication between Cork and Limerick, from Kilmallock, through Bruff, in preference to the proposed line through Brurea...

CANADIAN PACIFIC DIVIDEND.

The directors of the Canadian Pacific Railway have declared dividends of 2 p.c. on preference stock for half-year, and 2 1/2 p.c. on common stock, being at the rate of 7 p.c. per annum from revenue and 3 p.c. per annum from special income account...

FURTHER REDUCTIONS IN BRITISH ARMY.

In addition to the four cavalry regiments disbanded, it is stated more reductions are to be made in the British Army. It has now been decided to disband six infantry battalions...

CUT OFF BY TIDE.

Whilst bathing at Eastington, near Witherssea, two boy scouts were cut off by the tide and drowned in sight of their companions. The victims were Samuel Page, aged 14, and Herbert Chapman, aged 8, both of Camden Town, London...

NEWCASTLE WEST FAIRS AND MARKETS.

At the request of the Town Commissioners a meeting of the traders of the town was held at the Corporation Hall, on Thursday evening, to consider what steps should be taken towards the advancement of the fairs and markets...

CHEAPER COALS.

The letter which the Chairman of the London Coal Exporters' Association has addressed to the Prime Minister is of great importance. It is essential that the price of coal should be lowered and lowered before the £10,000,000 grant has been exhausted...

POST OFFICE METHODS.

Very many people are of opinion that the telephone service has not improved since it was taken over by the Post Office some years ago. Now a trifling £50,000,000 is to be expended on new telephone exchanges and extensions...

THE TOMATO.

There is no doubt, says the Bulletin of the Pan-American Union, that the tomato is indigenous to the West Indies. It is a native of a moist region. The name tomato is of Aztec origin, given by some as "tomatl" and by others as "xitomatl"...

105 YEARS OLD.

Mrs Martha Trevelyan, of Plumstead, was 105 on Sunday. A well-known woman, with silvery hair and an early Victorian dress, she is somewhat deaf, but her memory is very retentive, and she can talk of the days of coaches, catwalks, and courtly manners...

THE SUGAR MARKET.

It is conjectured that the rise in value to the sugar market (says "The Economist") has not yet finished. Distributors are now actively engaged in replenishing exhausted stocks, and all goods available on the spot or near at hand are promptly absorbed. At present there is an active demand for white sugar which is only partially met...

THE OUTPUT OF COAL.

Sir P. Lloyd George, answering Mr Gilbert, said the output of coal for the week ending July 16th, 1921, was 3,352,000 tons, and for the week ending July 23rd, 4,381,800 tons. The total for the week ending July 23rd is 4,381,800 tons, which is 47,381 tons better than that for the corresponding week last year. If coal is to become a big industry, it is quite essential that the great output which there are indications that the coal industry is capable of producing should be put to the use of the people...

LIMERICK HARBOUR TIDE TABLE.

Table with columns for Time, Height, and Tide. Includes data for August 1921, showing high and low tide times and heights.

WRITE MORE LEGIBLY.

A certain professor of one of the northern universities added to the distinction of an international reputation as a scholar the merit of a first-class in his country's written work of his students. One day he was approached by a painstaking student who wished to know the meaning of one of his words. The professor said he was equally puzzled. The student then said he had written the word as he found it in the subject matter of the essay. At long last light beamed upon the professor's eyes, and he revealed the explanation. "Write more legibly."

MAURICE FITZGERALD.

Secretary to Committee.

MINISTRY OF LABOUR.

An Army of Officials. The official report of the Ministry of Labour, just issued, shows that although the Department is only three years in existence, it has a staff of 1,000 officials, whose salaries total £2,000,000. The total cost of the Ministry is £20,000,000 a year, and it is increasing daily. The object of the Department, says the Daily Express, "was to do work for the unemployed. Its greatest success has been within its own doors."

THE OUTPUT OF COAL.

Sir P. Lloyd George, answering Mr Gilbert, said the output of coal for the week ending July 16th, 1921, was 3,352,000 tons, and for the week ending July 23rd, 4,381,800 tons. The total for the week ending July 23rd is 4,381,800 tons, which is 47,381 tons better than that for the corresponding week last year. If coal is to become a big industry, it is quite essential that the great output which there are indications that the coal industry is capable of producing should be put to the use of the people...

THE SUGAR MARKET.

It is conjectured that the rise in value to the sugar market (says "The Economist") has not yet finished. Distributors are now actively engaged in replenishing exhausted stocks, and all goods available on the spot or near at hand are promptly absorbed. At present there is an active demand for white sugar which is only partially met...

WRITE MORE LEGIBLY.

A certain professor of one of the northern universities added to the distinction of an international reputation as a scholar the merit of a first-class in his country's written work of his students. One day he was approached by a painstaking student who wished to know the meaning of one of his words. The professor said he was equally puzzled. The student then said he had written the word as he found it in the subject matter of the essay. At long last light beamed upon the professor's eyes, and he revealed the explanation. "Write more legibly."

MAURICE FITZGERALD.

Secretary to Committee.