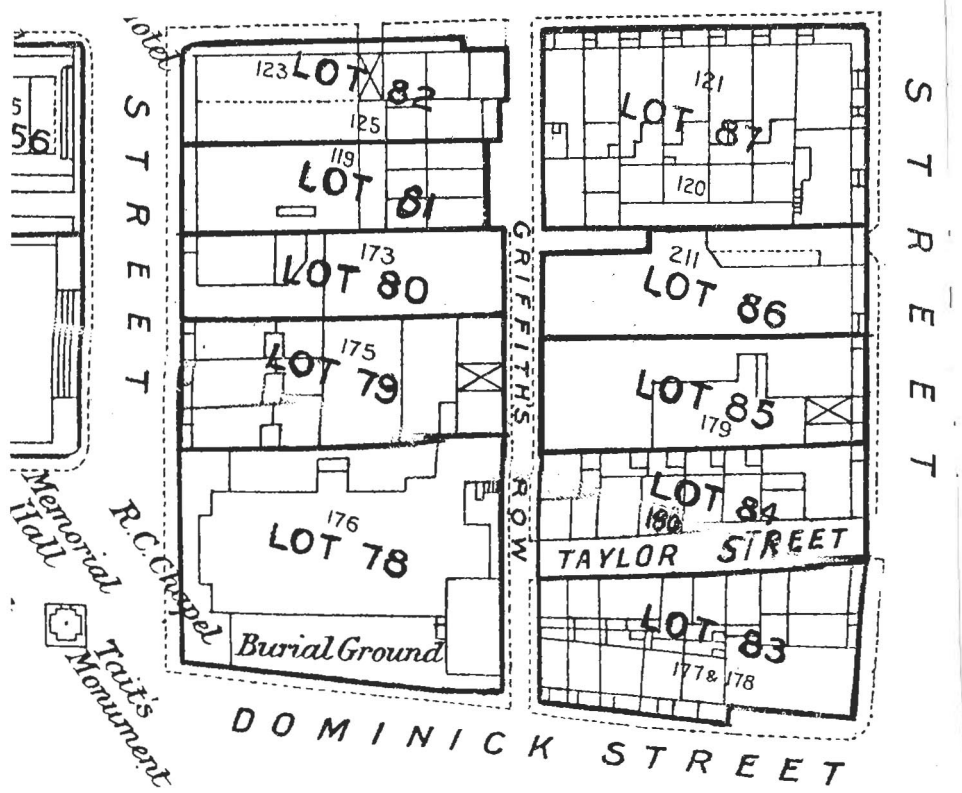


LOT 86

| Nos. on Map | DENOMINATIONS | Grantees' and Lessees' Names | Gale Days | Yearly Rent | TENURE | OBSERVATIONS |
|------------------|-----------------------------------|-----------------------------------------------------------|---------------------------|-------------------|-----------------------------------------------------------------------------------------------------------------------------------------------------------------------------------------------------------------------------------------------------------------------------------------------------------------------------------------------------------------------------------------------------------------------------------------------------------|-------------------------------------------------------------------------------------------------------------------------------------------------------------------------------------------------------------------------------------------------------------------------------------|
| Map No. 1 211 | The Athenæum, Cecil-street, Upper | The Mayor, Aldermen and Burgesses of the City of Limerick | 25th March and 29th Sept. | £ s. d. 20 4 8 | Fee-farm Grant, dated 19th April, 1855, made between William Henry Tennison, Earl of Limerick, of the one part, and the Mayor, Aldermen and Burgesses of the Borough of Limerick of the other part, in conversion of a Renewable Lease, dated 18th April, 1834, from Edmond Henry, Earl of Limerick, to Lord Viscount Glentworth, and several others, Commissioners appointed under Act 47, Geo. 4th., for paving, etc., Parish of St. Michael, Limerick. | The rent set out in the Xcnt Column may be liable to adjustment under the Local Government Acts. The Landlord's part of the Fee-farm Grant and of the Original Lease will be handed to the Purchaser. This rent is paid by the Secretary, Technical School, Limerick. |



a
The premises are described in the Grant as "All that piece or plot of ground in Upper Cecil-street, containing on the North side 142 feet 9 inches, on the South 143 feet 7 inches, on the East in front of Cecil-street 46 feet 8 inches, and on the West 36 feet 8 inches, bounded on the North by Dr. Griffith's holdings, and on the South by Garvey's holdings in Hannan-street, on the East by Cecil-street, and on the West by the lane called Collins's-lane, all which said premises are situate, lying and being in the Parish of Saint Michael and County of the City of Limerick."

The Grant reserves all mines, minerals, slate and coals quarries and all royalties.

The Grantee covenants to keep in repair the premises and all improvements.

Proviso that nothing contained in said Grant should be construed to extend to affect the person or estates of the said Mayor, Aldermen and Burgesses.

Total, £20 4 8