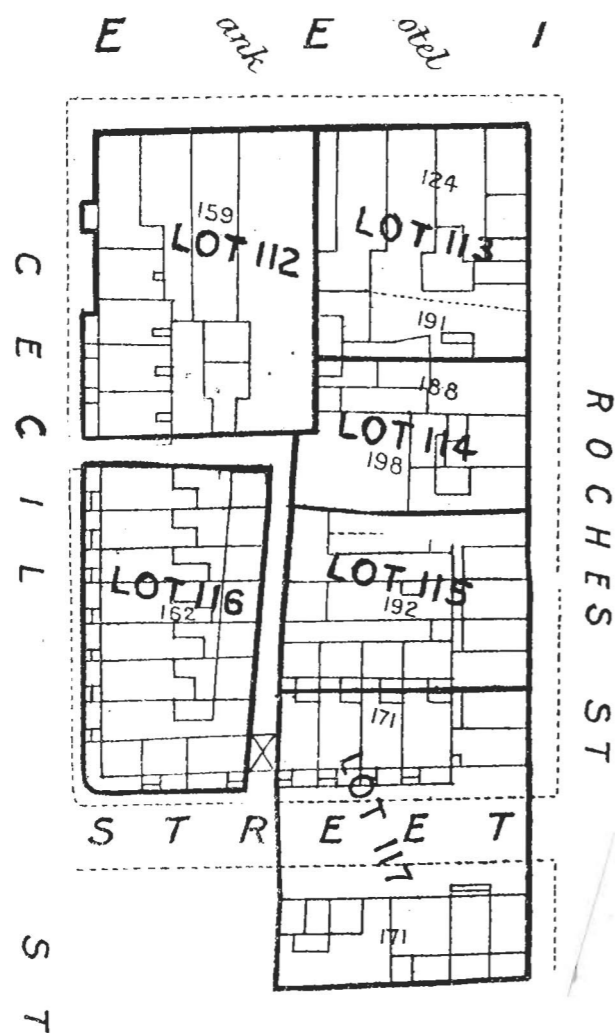


LOT 117.

| Nos. on Map | DENOMINATIONS | Grantees' and Lessees' Names | Gale Days | Yearly Rent | TENURE | OBSERVATIONS |
|------------------|---|------------------------------|----------------------|--------------------|--|---|
| Map No. 1 171 | 42. 43 and 44 Roche's-street. 14, 15, 16, 17, 18, 19, and 69, 60, 61, and 62 Catherine-street ... | Mary Josephine Cogan ... | 1st May and 1st Nov. | £ s. d. 7 11 0½ | Fee-farm Grant, dated 4th October, 1852, made between William Henry Cecil Tennison, Earl of Limerick, of the one part, and Mary Josephine Cogan, Spinster, of the other part, in conversion of a Renewable Lease, dated 1st August, 1809, from Edmond Henry, Earl of Limerick, to Laurence Durack. | The rent set out in the Rent Column may be liable to adjustment under the Local Government Acts. The Landlord's part of the Fee-farm Grant and of the Original Lease and such of the Renewals as are forthcoming will be handed to the Purchaser. This rent is paid by Mr. J. O. Myles, Crescent, Limerick. |



The premises are described in the Grant as "All that and those the aforesaid two plots of ground, marked No. 1 and 2 in the Map to said Lease of 1st August, 1809, annexed, being part of South Priors Land, in the then South Liberties of the City of Limerick, the lot No. 1, containing in front to Roche's-street 37 feet, and from front to rear 110 feet, be the same more or less, and described in said Lease as then bounded on the East by Roche's-street, on the West by Launcelot Hill's holdings, on the North by Charles Keating's holdings, and on the South by a lot of ground 60 feet wide, then intended immediately to be opened for a continuation of Catherine-street, and the lot No. 2, containing in front to Roche's-street 38 feet, and from front to rear 110 feet, be the same more or less, and described in said Lease as then bounded on the East by Roche's street, on the West by the Earl of Limerick's holdings, on the North by the aforesaid lot of ground, then intended immediately to be opened for a continuation of Catherine-street, and on the South by William-Reid's holdings, and which said premises are now situate, lying, and being in Roche's-street and Catherine-street, Parish of Saint Michael, and City or Borough of Limerick."

The Grant reserves all mines, minerals and royalties. Grantee covenants to keep in repair the premises, buildings, and all improvements.

Total, £7 11 0½