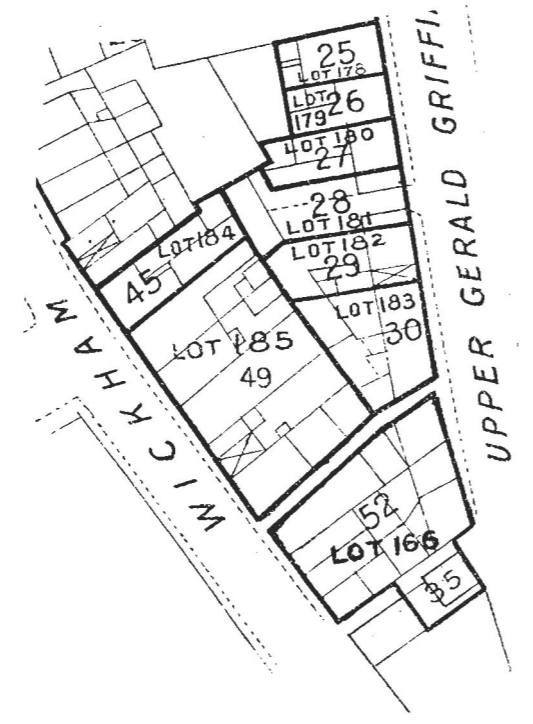


LOT 166.

Nos. on Map	DENOMINATIONS	Grantees' and Lessees' Names	Gale Days	Yearly Rent	TENURE	OBSERVATIONS
Map No. 7 35	18, 19, 20 and 21 Gerald Griffin-street, Upper, late Cornwallis-street 16, 17, 18 and 19 Wickham-street Two Houses in lane off Wickham-street	John J. Foley	25th March and 29th Sept.	£ s. d. 4 0 0	Lease, dated 9th April, 1907, made between the Right Honourable William Henry Edmond de Vere Sheaffe, Earl of Limerick of the one part, and John J. Foley of the other part, for the term of 99 years, from the 29th day of September, 1906, in consideration of having built a house thereon.	The rent set out in the Rent Column is not subject to adjustment. The Landlord's part of the Original Lease will be handed to the Purchaser. This rent is paid by Mr. John J. Foley, Wickham-street, Limerick.
					The premises are described in the Lease as "All that and those the plot of ground situate in Upper Gerald Griffin-street, in the Parish of Saint Michael and City of Limerick, containing in front to the said street on the South side 22 feet and four inches, bounded on the East side by White's-lane, and containing in depth from front to rear 41 feet and 8 inches, on the West side by premises in the possession of J. O'Brien, and containing in depth from front to rear 32 feet and 8 inches, and on the North side by premises in the possession of Doyle, containing in breadth 20 feet and 6 inches," as delineated on the Map endorsed thereon.	
					The Lessee reserves all mines, minerals, quarries, and all other royalties.	
					The Lease contains covenants by the Lessee to pay sanitary rates, to lay and make proper sewers, sinks and drains to the satisfaction of the Lessor and the Sanitary Authorities of the district, to keep in repair, against alienation without Landlord's consent, to insure in joint names of Lessor and Lessee in the sum of £200, and contains a clause of view.	

LOT 166 —continued.

Nos. on Map	DENOMINATIONS	Grantees' and Lessees' Names	Gale Days	Yearly Rent	TENURE	OBSERVATIONS
Map No. 8				Brought forward, -	£ 4 0 0	
52	—	... John Magill	... 25th March and 29th Sept.	30 0 0	Lease, dated 6th April, 1880, made between William Hale John Charles, Earl of Limerick, of the one part. and John Magill of the other part, for the term of 99 years, from the 25th March, 1880.	The rent set out in the Rent Column may be liable to adjustment under the Local Government Acts. The Landlord's part of the Original Lease will be handed to the Purchaser.



The premises are described in the Lease as "All that and those the piece or plot of ground in Upper Cornwallis-street, containing in front to said street 64 feet 7½ inches, in the rear 52 feet 4 inches, from front to rear on the North 101 feet 8 inches, and from front to rear on the South 76 feet 7 inches, be the said several ad-measurements more or less, and which premises are bounded on the East by Upper Cornwallis-street, on the West by Wickham-street, on the North by Narrow-lane, and on the South by Wide-lane, situate in the Parish of Saint Michael's and City of Limerick," as delineated on annexed Nap.

The Lease reserves all mines, minerals, quarries and all other royalties and franchises whatsoever.

The Lease contains covenants by the Lessee to build a dwelling-house and expend £200 at least; to keep in repair the premises and all improvements; to insure in the sum of £200 in the joint names of the Lessor and Lessee; against alienation without Lessor's consent; and contains a clause of view by Lessor.

Total, £34 0 0

The Estimated Tenement Valuation of this lot is £49 15s.