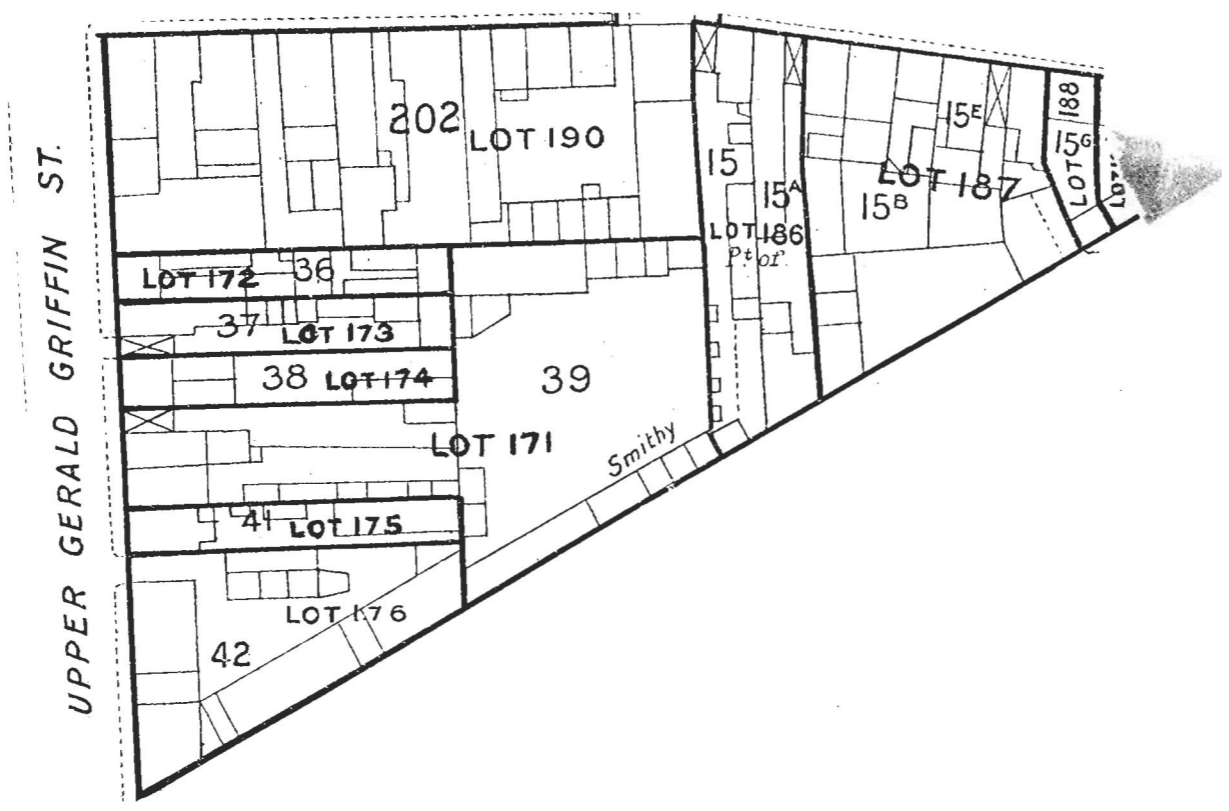


LOT 175.

| Nos. on Map | DENOMINATIONS | Grantees' and Lessees' Names | Gale Days | Yearly Rent | TENURE | OBSERVATIONS |
|-----------------|---|------------------------------|---------------------------------|------------------|--|--|
| Map No. 8 41 | 9 Upper Gerald Griffin-street? Cornwallis-street | late Mrs. Catherine Quin ... | 25th March and 29th Sept. | £ s. d. 9 7 6 | Tenancy from year to year. Tenancy commenced 29th September. | The rent set out in the Rent Column is an adjusted rent. This rent is paid by Mrs. Catherine Quin, Gerald Griffin-street, Limerick. |



Total, £9 7 6

The Estimated Tenement Valuation of this lot is £9