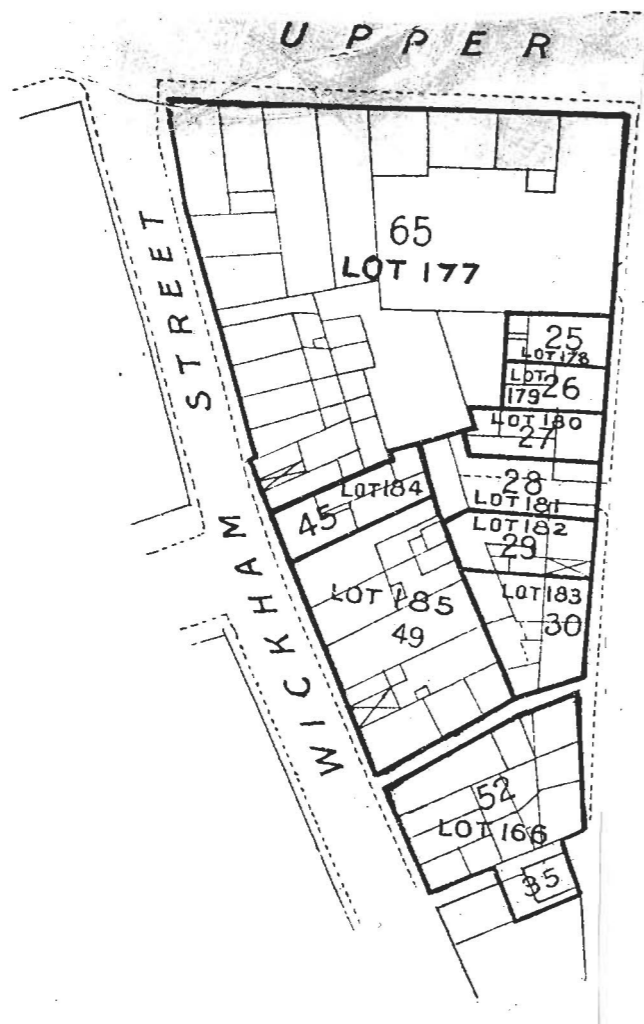


# LOT 178.

Nos on Map	DENOMINATIONS	Grantees' and Lessees' Names	Gale Days	Yearly Rent	TENURE	OBSERVATIONS
Map No. 8 25	28 Upper Gerald Griffin-street, lato Cornwallis-street	Thomas Moloney	25th March and 29th Sept.	£ s. d. 6 11 6	Lease, dated 2nd December, 1886, made between William Hale John Charles, Earl of Limerick, of the one part, and Thomas Moloney of the other part, for the term of 99 years, from the 25th March, 1886, in consideration of Tenant having expended £400.	The rent set out in the Rent Column is an adjusted rent.  The Landlord's part of the Original Lease will be handed to the Purchaser.  This rent is paid by Mr. Thomas Hannon, Gerald Griffin-street, Limerick.



The premises are described in the Lease as "All that and those the house and premises situate in Upper Cornwallis-street, measuring in front to said street 24 feet 8 inches, in rear 25 feet 2 inches, and in depth from front to rear 48 feet, be the said several admeasurements more or less, bounded on the North by premises in the possession of the Representatives of L. Quinlivan, on the South by Cornwallis-street, on the East by premises in the possession of T. R. Tinsley, and on the West by premises in the possession of Representatives of William O'Donnell, all which said premises are situate in the Parish of Saint Michael and City of Limerick," as delineated on the Map annexed.

The Lease reserves all mines, minerals, quarries and all other royalties.

The Lease contains covenants by the Lessee to make sewers, etc., required by the Sanitary Authorities, to pay sanitary rates, to keep in repair, against alienation without the Landlord's consent, to insure for £350 in joint names of Lessor and Lessee, and contains a clause of view by the Lessor, and a covenant by Lessee not to erect any building which should injuriously affect the light to the window of the adjoining premises at point marked "A" on Map.

Total, £6 11 6

The Estimated Tenement Valuation of this lot is £6