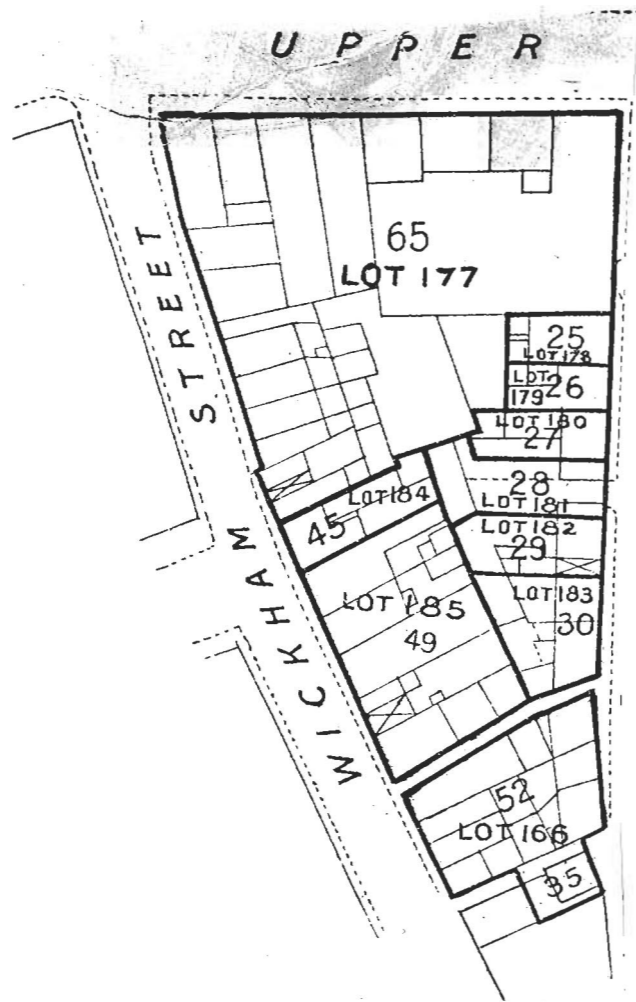


LOT 179.

Nos. on Map	DENOMINATIONS	Grantees' and Lessees' Names	Gale Days	Yearly Rent	TENURE	OBSERVATIONS
Map No. 8 26	Upper Gerald Griffin-street, late Cornwallis-street	Mrs. O'Donnell	... 25th March and 29th Sept.	£ s. d. 5 14 6	Tenancy from year to year. Tenancy commenced 29th September.	The rent set out in the Bent Column is an adjusted rent. This rent is paid by Messrs. O'Donnell, Gerald Griffin-street, Limerick



Total, £5 14 6

The Estimated Tenement Valuation of this lot is £4