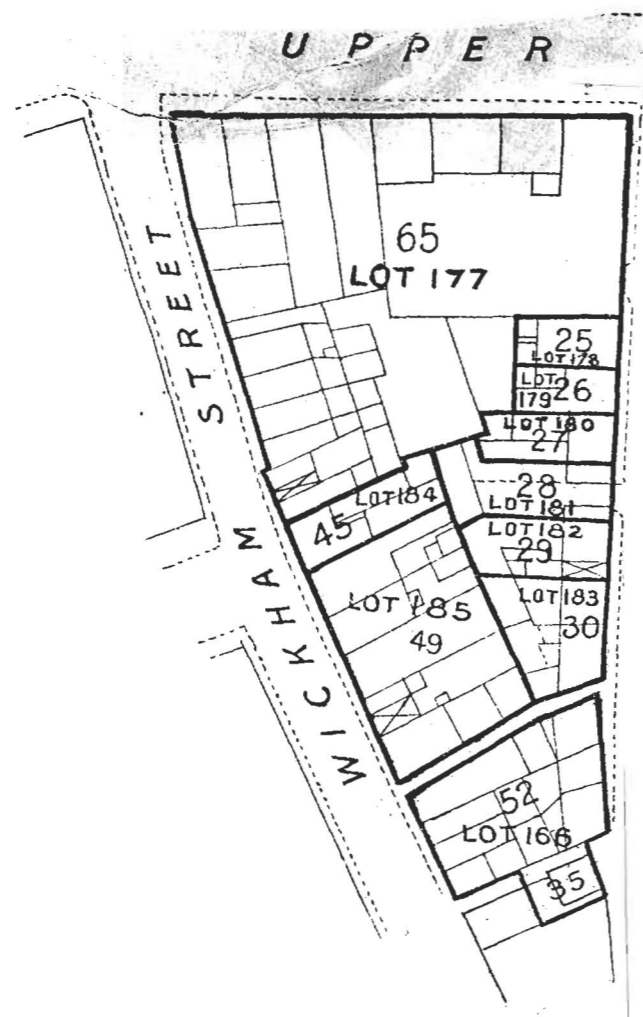


LOT 181

Nos. on Map	DENOMINATIONS	Grantees' and Lessees' Names	Gale Days	Yearly Rent	TENURE	OBSERVATIONS
Map No. 8 28	25 Upper Gerald Griffin-street, late Cornwallis-street	Thomas Moloney	... 25th March and 29th Sept.	£ s. d. 8 14 0	Lease, dated 2nd December, 1886, made between William Hale John Charles, Earl of Limerick, of the one part, and Thomas Moloney of the other part, for the term of 99 years, from the 25th day of March, 1886.	The rent set out in the Rent Column is an adjusted rent. The Landlord's part of the Original Lease will be handed to the Purchaser. This rent is paid by Mr. Thomas Hannon, Gerald Griffin-street, Limerick.



The premises are described in the Lease as "All that and those the piece or plot of ground with the buildings thereon in Cornwallis-street, measuring in front to said street 29 feet, in rear 37 feet 9 inches, and in depth from front to rear at the East side 77 feet 9 inches, and on the West side 74 feet, and which premises are bounded on the North by premises in the possession of the Representatives of W. O'Donnell and P. Raleigh, on the South by Cornwallis-street, on the East by premises in the possession of the Representatives of Mary Walsh and on the West by premises in the possession of the Representatives of William O'Donnell, situate in the Parish of Saint Michael's and City of Limerick," as delineated on the Map annexed.

The Lease reserves all mines, minerals, quarries and all other royalties.

The Lease contains covenants by the Lessee, within two years from the date of the Lease, to expend in rebuilding and repairing the sum of £150, to lay and make sewers, etc., to the satisfaction of the Sanitary Authorities of the City of Limerick, to pay sanitary rates, to keep in repair, against alienation without Landlord's consent, to insure in joint names of Lessor and Lessee for £100, and contains a clause of view.

Total, £8 14 0

The Estimated Tenement Valuation of this lot is £4 10s.