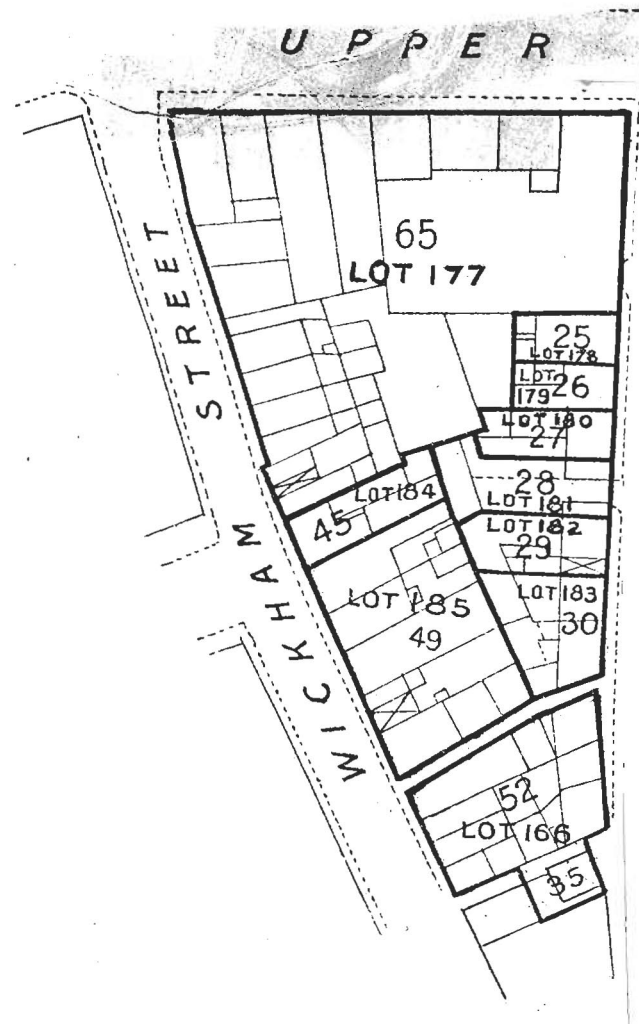


LOT 182.

Nos. on Map	DENOMINATIONS	Grantees' and Lessees' Names	Gals Days	Yearly Rent	TENURE	OBSERVATIONS
Map No, 8 29	24 Upper Gerald Griffin-street, late Cornwallis-street	Bridget Ryan	25th March and 29th Sept.	£ s. d. 3 10 0	Lease, dated 15th August, 1906, made between William Henry Edmond de Vere Sheaffe, Earl of Limerick, of the one part, and Bridget Ryan, Spinster, of the other part, for the term of 99 years, from the 29th day of September, 1905, in consideration of £800 expended in buildings.	The rent set out in the Rent Column is an adjusted rent. The Landlord's part of the Original Lease will be handed to the Purchaser. This rent is paid by Miss Bridget Ryau, Gerald Griffin-street, Limerick.



The premises a-e described in the Lease as "All that and those the house, yard and premises situate in Gerald Griffin-street, in the Parish of Saint Michael, and City of Limerick, containing in front to said street 24 feet, bounded on the East by premises in the possession of John Hannan, containing in depth from front to rear two several measurements of 57 feet 5 inches and 17 feet respectively, on the West by premises in the possession of Mrs. Leahy, containing in depth from front to rear two several measurements of 43 feet, and 17 feet 4 inches respectively, and on the North by premises in the possession of William Ryan, all which said demised premises with the admeasurements are delineated on the Map thereon."

The Lease reserves all mines, minerals, quarries, and all other royalties whatsoever.

The Lease contains covenants by the Lessee at all times to lay and maintain all proper sewers, etc., to the satisfaction of the Sanitary Authorities, and to pay sanitary rates, to keep in repair, against alienation without the Lessor's consent, and contains clause of view by the Lessor. To insure in joint names of Lessor and Lessee for £400.

Total, £8 10 0